

## Product datasheet for **TA380135**

### **PRAF1 (POLR1E) Rabbit Polyclonal Antibody**

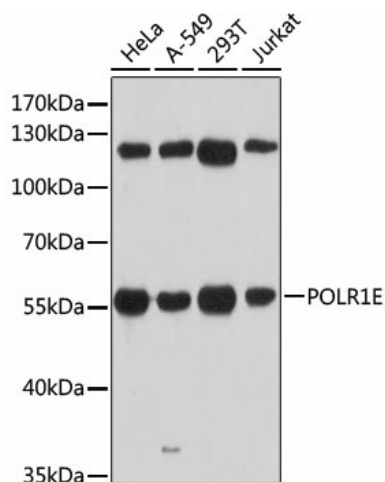
#### **Product data:**

<b>Product Type:</b>	Primary Antibodies
<b>Applications:</b>	IP, WB
<b>Recommended Dilution:</b>	WB,1:500 - 1:2000 IP,1:50 - 1:100
<b>Reactivity:</b>	Human, Mouse, Rat
<b>Modifications:</b>	Unmodified
<b>Host:</b>	Rabbit
<b>Isotype:</b>	IgG
<b>Clonality:</b>	Polyclonal
<b>Immunogen:</b>	Recombinant fusion protein containing a sequence corresponding to amino acids 1-419 of human POLR1E (NP_071935.1).
<b>Formulation:</b>	Buffer: PBS with 0.02% sodium azide,50% glycerol,pH7.3.
<b>Concentration:</b>	lot specific
<b>Purification:</b>	Affinity purification
<b>Conjugation:</b>	Unconjugated
<b>Storage:</b>	Store at -20°C. Avoid freeze / thaw cycles.
<b>Stability:</b>	Shelf life: one year from despatch.
<b>Predicted Protein Size:</b>	47kDa/53kDa
<b>Gene Name:</b>	polymerase (RNA) I subunit E
<b>Database Link:</b>	<a href="#">Entrez Gene 64425 Human Q9GZS1</a>
<b>Background:</b>	DNA-dependent RNA polymerase catalyzes the transcription of DNA into RNA using the four ribonucleoside triphosphates as substrates. Component of RNA polymerase I which synthesizes ribosomal RNA precursors. Appears to be involved in the formation of the initiation complex at the promoter by mediating the interaction between Pol I and UBTF/UBF.
<b>Synonyms:</b>	FLJ13390; FLJ13970; PAF53; PRAF1; RP11-405L18.3

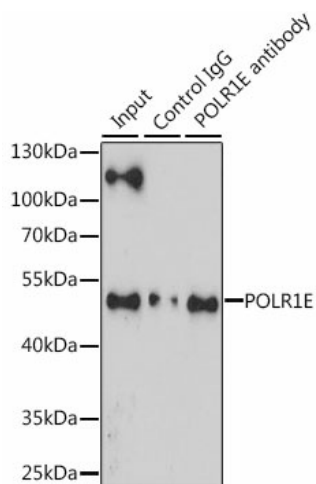


[View online »](#)

## Product images:



Western blot analysis of extracts of various cell lines, using POLR1E antibody (TA380135) at 1:3000 dilution. | Secondary antibody: HRP Goat Anti-Rabbit IgG (H+L) at 1:10000 dilution. | Lysates/proteins: 25ug per lane. | Blocking buffer: 3% nonfat dry milk in TBST. | Detection: ECL Basic Kit. | Exposure time: 30s.



Immunoprecipitation analysis of 200ug extracts of Jurkat cells, using 3 ug POLR1E antibody (TA380135). Western blot was performed from the immunoprecipitate using POLR1E antibody (TA380135) at a dilution of 1:1000.