

## Product datasheet for **TA380125S**

### **POLE4 Rabbit Polyclonal Antibody**

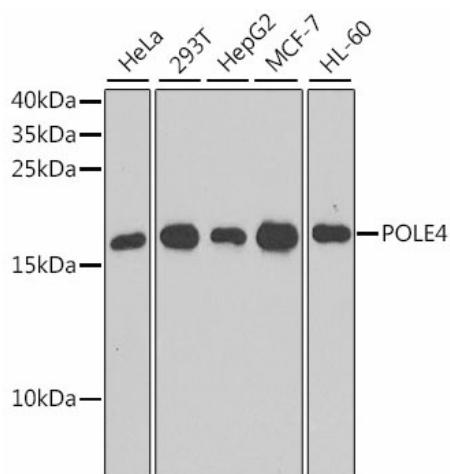
#### **Product data:**

<b>Product Type:</b>	Primary Antibodies
<b>Applications:</b>	WB
<b>Recommended Dilution:</b>	WB,1:500 - 1:2000
<b>Reactivity:</b>	Human
<b>Modifications:</b>	Unmodified
<b>Host:</b>	Rabbit
<b>Isotype:</b>	IgG
<b>Clonality:</b>	Polyclonal
<b>Immunogen:</b>	Recombinant fusion protein containing a sequence corresponding to amino acids 1-117 of human POLE4 (NP_063949.2).
<b>Formulation:</b>	Buffer: PBS with 0.02% sodium azide,50% glycerol,pH7.3.
<b>Concentration:</b>	lot specific
<b>Purification:</b>	Affinity purification
<b>Conjugation:</b>	Unconjugated
<b>Storage:</b>	Store at -20°C. Avoid freeze / thaw cycles.
<b>Stability:</b>	Shelf life: one year from despatch.
<b>Predicted Protein Size:</b>	12kDa
<b>Gene Name:</b>	polymerase (DNA) epsilon 4, accessory subunit
<b>Database Link:</b>	<a href="#">Entrez Gene 56655 Human Q9NR33</a>
<b>Background:</b>	POLE4 is a histone-fold protein that interacts with other histone-fold proteins to bind DNA in a sequence-independent manner. These histone-fold protein dimers combine within larger enzymatic complexes for DNA transcription, replication, and packaging.[supplied by OMIM, Apr 2004]
<b>Synonyms:</b>	p12; YHHQ1



[View online »](#)

## Product images:



Western blot analysis of extracts of various cell lines, using POLE4 antibody ([TA380125]) at 1:1000 dilution. | Secondary antibody: HRP Goat Anti-Rabbit IgG (H+L) at 1:10000 dilution. | Lysates/proteins: 25ug per lane. | Blocking buffer: 3% nonfat dry milk in TBST. | Detection: ECL Basic Kit . | Exposure time: 90s.