

## Product datasheet for **TA380123**

### POLE2 Rabbit Polyclonal Antibody

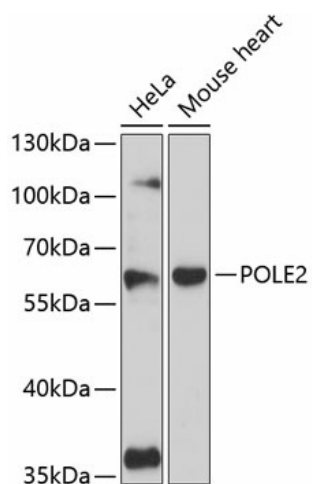
#### Product data:

Product Type:	Primary Antibodies
Applications:	WB
Recommended Dilution:	WB,1:500 - 1:2000
Reactivity:	Human, Mouse
Modifications:	Unmodified
Host:	Rabbit
Isotype:	IgG
Clonality:	Polyclonal
Immunogen:	Recombinant fusion protein containing a sequence corresponding to amino acids 1-290 of human POLE2 (NP_002683.2).
Formulation:	Buffer: PBS with 0.02% sodium azide,50% glycerol,pH7.3.
Concentration:	lot specific
Purification:	Affinity purification
Conjugation:	Unconjugated
Storage:	Store at -20°C. Avoid freeze / thaw cycles.
Stability:	Shelf life: one year from despatch.
Predicted Protein Size:	56kDa/59kDa
Gene Name:	polymerase (DNA) epsilon 2, accessory subunit
Database Link:	<a href="#">Entrez Gene 5427 Human P56282</a>
Background:	DNA polymerase epsilon, which is involved in DNA repair and replication, is composed of a large catalytic subunit and a small accessory subunit. The protein encoded by this gene represents the small subunit (B). Defects in this gene have been linked to colorectal cancer and to combined immunodeficiency.
Synonyms:	DPE2



[View online »](#)

## Product images:



Western blot analysis of extracts of various cell lines, using POLE2 antibody (TA380123) at 1:3000 dilution. | Secondary antibody: HRP Goat Anti-Rabbit IgG (H+L) at 1:10000 dilution. | Lysates/proteins: 25ug per lane. | Blocking buffer: 3% nonfat dry milk in TBST. | Detection: ECL Basic Kit. | Exposure time: 90s.