

## Product datasheet for **TA380117**

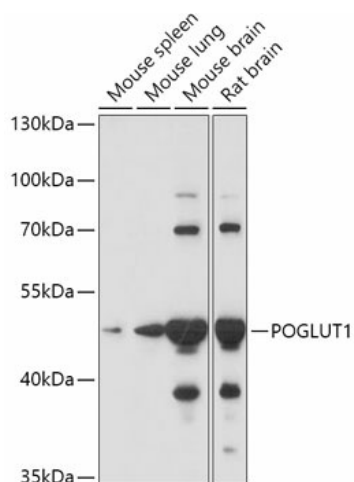
### **KTEL1 (POGLUT1) Rabbit Polyclonal Antibody**

#### **Product data:**

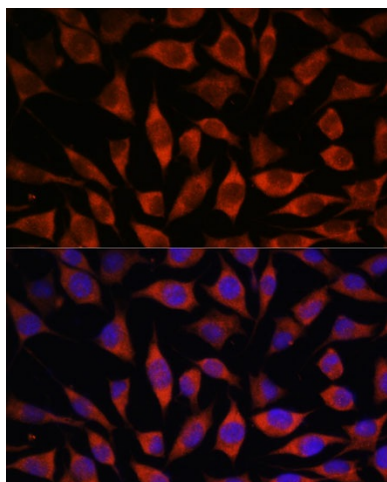
|                              |  |
|------------------------------|--|
| <b>Product Type:</b>         | Primary Antibodies   |
| <b>Applications:</b>         | ICC/IF, WB   |
| <b>Recommended Dilution:</b> | WB,1:500 - 1:2000<br>IF,1:50 - 1:200   |
| <b>Reactivity:</b>           | Mouse, Rat   |
| <b>Modifications:</b>        | Unmodified   |
| <b>Host:</b>                 | Rabbit   |
| <b>Isotype:</b>              | IgG  |
| <b>Clonality:</b>            | Polyclonal   |
| <b>Immunogen:</b>            | Recombinant fusion protein containing a sequence corresponding to amino acids 160-280 of human POGLUT1 (NP_689518.1).  |
| <b>Formulation:</b>          | Buffer: PBS with 0.02% sodium azide,50% glycerol,pH7.3.  |
| <b>Concentration:</b>        | lot specific   |
| <b>Purification:</b>         | Affinity purification  |
| <b>Conjugation:</b>          | Unconjugated   |
| <b>Storage:</b>              | Store at -20°C. Avoid freeze / thaw cycles.  |
| <b>Stability:</b>            | Shelf life: one year from despatch.  |
| <b>Gene Name:</b>            | protein O-glucosyltransferase 1  |
| <b>Database Link:</b>        | <a href="#">Q8NBL1</a>   |
| <b>Background:</b>           | This gene encodes a protein with both O-glucosyltransferase and O-xylosyltransferase activity which localizes to the lumen of the endoplasmic reticulum. This protein has a carboxy-terminal KTEL motif which is predicted to function as an endoplasmic reticulum retention signal. This gene is an essential regulator of Notch signalling and likely plays a role in cell fate and tissue formation during development. It may also play a role in the pathogenesis of leukemia. Mutations in this gene have been associated with the autosomal dominant genodermatosis Dowling-Degos disease 4. Alternative splicing results in multiple transcript variants. [provided by RefSeq, Apr 2014] |
| <b>Synonyms:</b>             | 9630046K23Rik; Ktelc1; Rumi  |



[View online »](#)

**Product images:**

Western blot analysis of extracts of various cell lines, using POGLUT1 antibody (TA380117) at 1:1000 dilution. | Secondary antibody: HRP Goat Anti-Rabbit IgG (H+L) at 1:10000 dilution. | Lysates/proteins: 25ug per lane. | Blocking buffer: 3% nonfat dry milk in TBST. | Detection: ECL Basic Kit . | Exposure time: 15s.



Immunofluorescence analysis of L929 cells using POGLUT1 antibody (TA380117) at dilution of 1:100. Blue: DAPI for nuclear staining.