

Product datasheet for **TA380114S**

POF1B Rabbit Polyclonal Antibody

Product data:

Product Type:	Primary Antibodies
Applications:	ELISA, WB
Recommended Dilution:	WB, 1:500 - 1:2000 ELISA, Recommended starting concentration is 1 µg/mL. Please optimize the concentration based on your specific assay requirements.
Reactivity:	Human, Rat
Modifications:	Unmodified
Host:	Rabbit
Isotype:	IgG
Clonality:	Polyclonal
Formulation:	Buffer: PBS with 0.02% sodium azide, 50% glycerol, pH 7.3.
Concentration:	lot specific
Purification:	Affinity purification
Conjugation:	Unconjugated
Storage:	Store at -20°C. Avoid freeze / thaw cycles.
Stability:	Shelf life: one year from despatch.
Predicted Protein Size:	68kDa
Gene Name:	premature ovarian failure, 1B
Database Link:	Entrez Gene 79983 Human Q8WVV4



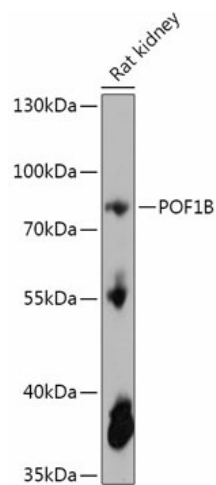
[View online »](#)

Background:

Premature ovarian failure (POF) is characterized by primary or secondary amenorrhea in women less than 40 years old. Two POF susceptibility regions called "POF1" and "POF2" have been identified by breakpoint mapping of X-autosome translocations. POF1 extends from Xq21-qter while POF2 extends from Xq13.3 to Xq21.1. This gene, POF1B, resides in the POF2 region. This gene is expressed at trace levels in mouse prenatal ovary and is barely detectable or absent from adult ovary, in human and in the mouse respectively. This gene's expression is restricted to epithelia with its highest expression in the epidermis, and oro-pharyngeal and gastro-intestinal tracts. The protein encoded by this gene binds non-muscle actin filaments. The role this gene may play in the etiology of premature ovarian failure remains to be determined.

Synonyms:

FLJ22792; POF; POF2B

Product images:


Western blot analysis of lysates from Rat kidney