

Product datasheet for **TA380113**

PODXL Rabbit Polyclonal Antibody

Product data:

| | |
|-------------------------|---|
| Product Type: | Primary Antibodies |
| Applications: | WB |
| Recommended Dilution: | WB,1:1000 - 1:2000 IF,1:100 - 1:200 |
| Reactivity: | Human, Mouse |
| Modifications: | Unmodified |
| Host: | Rabbit |
| Isotype: | IgG |
| Clonality: | Polyclonal |
| Immunogen: | Recombinant fusion protein containing a sequence corresponding to amino acids 287-526 of human PODXL (NP_005388.2). |
| Formulation: | Buffer: PBS with 0.02% sodium azide,50% glycerol,pH7.3. |
| Concentration: | lot specific |
| Purification: | Affinity purification |
| Conjugation: | Unconjugated |
| Storage: | Store at -20°C. Avoid freeze / thaw cycles. |
| Stability: | Shelf life: one year from despatch. |
| Predicted Protein Size: | 55kDa/58kDa |
| Gene Name: | podocalyxin like |
| Database Link: | Entrez Gene 5420 Human O00592 |

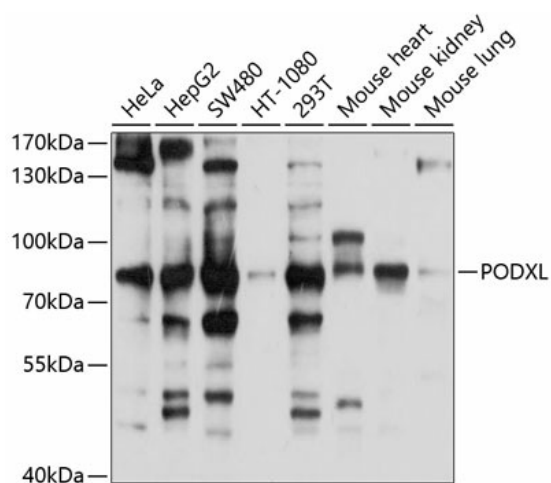
Background: This gene encodes a member of the sialomucin protein family. The encoded protein was originally identified as an important component of glomerular podocytes. Podocytes are highly differentiated epithelial cells with interdigitating foot processes covering the outer aspect of the glomerular basement membrane. Other biological activities of the encoded protein include: binding in a membrane protein complex with Na⁺/H⁺ exchanger regulatory factor to intracellular cytoskeletal elements, playing a role in hematopoietic cell differentiation, and being expressed in vascular endothelium cells and binding to L-selectin.



[View online »](#)

Synonyms: Gp200; MGC138240; PC; PCLP; PCLP1; podocalyxin-like

Product images:



Western blot analysis of extracts of various cell lines, using PODXL antibody (TA380113) at 1:1000 dilution. | Secondary antibody: HRP Goat Anti-Rabbit IgG (H+L) at 1:10000 dilution. | Lysates/proteins: 25ug per lane. | Blocking buffer: 3% nonfat dry milk in TBST. | Detection: ECL Basic Kit . | Exposure time: 3s.