

Product datasheet for **TA380101S**

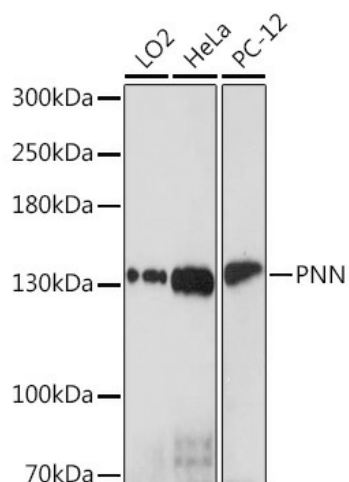
Pinin (PNN) Rabbit Polyclonal Antibody

Product data:

Product Type:	Primary Antibodies
Applications:	ELISA, WB
Recommended Dilution:	WB, 1:500 - 1:2000 ELISA, Recommended starting concentration is 1 µg/mL. Please optimize the concentration based on your specific assay requirements.
Reactivity:	Human, Rat
Host:	Rabbit
Isotype:	IgG
Clonality:	Polyclonal
Formulation:	Buffer: PBS with 0.02% sodium azide, 50% glycerol, pH 7.3.
Concentration:	lot specific
Purification:	Affinity purification
Conjugation:	Unconjugated
Storage:	Store at -20°C. Avoid freeze / thaw cycles.
Stability:	Shelf life: one year from despatch.
Predicted Protein Size:	82kDa
Gene Name:	pinin, desmosome associated protein
Database Link:	Entrez Gene 5411 Human Q9H307
Background:	Enables RNA binding activity. Predicted to be involved in cell adhesion and mRNA splicing, via spliceosome. Predicted to act upstream of or within cell-cell adhesion. Located in nuclear speck. Part of catalytic step 2 spliceosome. Colocalizes with exon-exon junction complex.
Synonyms:	DRS; DRSP; memA; pinin; SDK3



[View online »](#)

Product images:

Western blot analysis of various lysates using PNN Rabbit pAb (TA380101S) at 1:1000 dilution. Secondary antibody: HRP-conjugated Goat anti-Rabbit IgG (H+L) (AS014) at 1:10000 dilution. Lysates/proteins: 25µg per lane. Blocking buffer: 3% nonfat dry milk in TBST. Detection: ECL Enhanced Kit (RM00021). Exposure time: 90s.