

## Product datasheet for **TA380097S**

### Pancreatic Lipase Related Protein 2 (PNLIPRP2) Rabbit Polyclonal Antibody

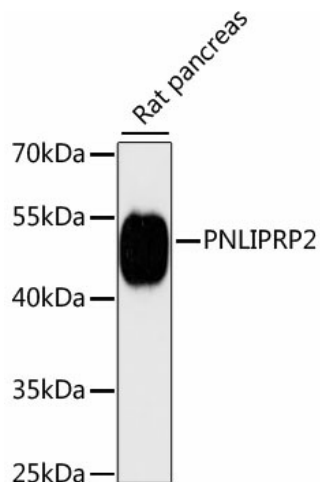
#### Product data:

Product Type:	Primary Antibodies
Applications:	ICC/IF, WB
Recommended Dilution:	WB, 1:500 - 1:1000 IF, 1:50 - 1:200
Reactivity:	Mouse, Rat
Modifications:	Unmodified
Host:	Rabbit
Isotype:	IgG
Clonality:	Polyclonal
Immunogen:	Recombinant fusion protein containing a sequence corresponding to amino acids 301-470 of human PNLIPRP2 (NP_005387.2).
Formulation:	Buffer: PBS with 0.02% sodium azide, 50% glycerol, pH 7.3.
Concentration:	lot specific
Purification:	Affinity purification
Conjugation:	Unconjugated
Storage:	Store at -20°C. Avoid freeze / thaw cycles.
Stability:	Shelf life: one year from despatch.
Predicted Protein Size:	51kDa
Gene Name:	pancreatic lipase related protein 2 (gene/pseudogene)
Database Link:	<a href="#">P54317</a>
Background:	This gene encodes a lipase that hydrolyzes galactolipids, the main components of plant membrane lipids. An allelic polymorphism in this gene results in both coding and non-coding variants; the reference genome represents the non-coding allele.
Synonyms:	PL-RP2; PLRP2

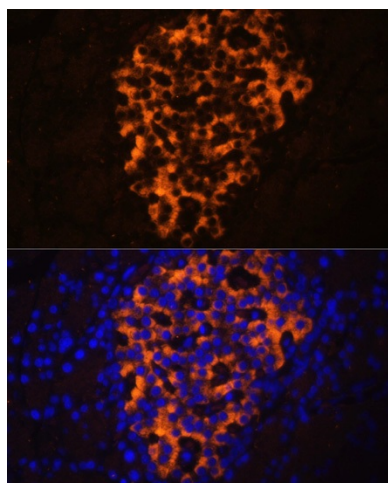


[View online »](#)

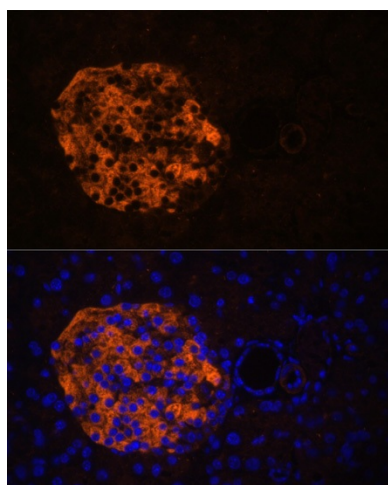
## Product images:



Western blot analysis of extracts of rat pancreas, using PNLIPRP2 antibody ([TA380097]) at 1:3000 dilution. | Secondary antibody: HRP Goat Anti-Rabbit IgG (H+L) at 1:10000 dilution. | Lysates/proteins: 25ug per lane. | Blocking buffer: 3% nonfat dry milk in TBST. | Detection: ECL Enhanced Kit. | Exposure time: 90s.



Immunofluorescence analysis of rat pancreas using PNLIPRP2 antibody ([TA380097]) at dilution of 1:100. Blue: DAPI for nuclear staining.



Immunofluorescence analysis of mouse pancreas using PNLIPRP2 antibody ([TA380097]) at dilution of 1:100. Blue: DAPI for nuclear staining.