

Product datasheet for **TA380096**

PNLIPRP1 Rabbit Polyclonal Antibody

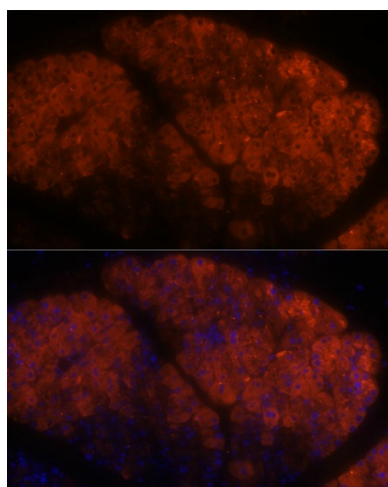
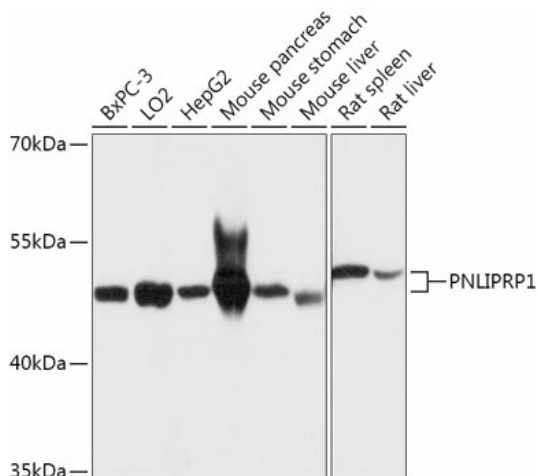
Product data:

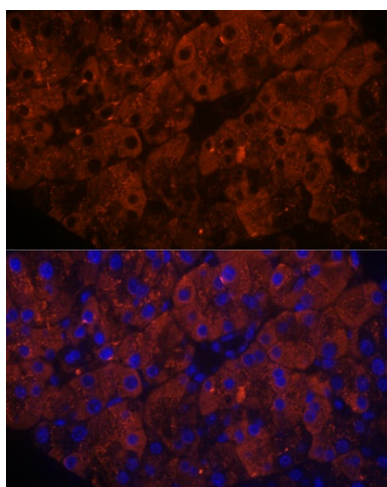
Product Type:	Primary Antibodies
Applications:	ICC/IF, IHC, WB
Recommended Dilution:	WB,1:500 - 1:2000 IHC,1:100 - 1:200 IF,1:50 - 1:200
Reactivity:	Human, Mouse, Rat
Modifications:	Unmodified
Host:	Rabbit
Isotype:	IgG
Clonality:	Polyclonal
Immunogen:	Recombinant fusion protein containing a sequence corresponding to amino acids 298-467 of human PNLIPRP1 (NP_006220.1).
Formulation:	Buffer: PBS with 0.02% sodium azide,50% glycerol,pH7.3.
Concentration:	lot specific
Purification:	Affinity purification
Conjugation:	Unconjugated
Storage:	Store at -20°C. Avoid freeze / thaw cycles.
Stability:	Shelf life: one year from despatch.
Gene Name:	pancreatic lipase related protein 1
Database Link:	Entrez Gene 5407 Human P54315
Background:	May function as inhibitor of dietary triglyceride digestion. Lacks detectable lipase activity towards triglycerides, diglycerides, phosphatidylcholine, galactolipids or cholesterol esters (in vitro (By similarity).
Synonyms:	PL-RP1; PLRP1



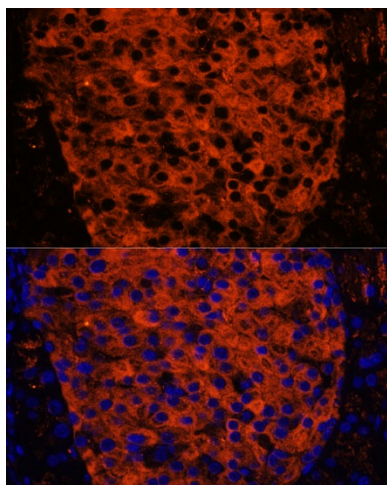
[View online »](#)

Product images:





Immunofluorescence analysis of rat pancreas using PNLIPRP1 antibody (TA380096) at dilution of 1:100. Blue: DAPI for nuclear staining.



Immunofluorescence analysis of mouse pancreas using PNLIPRP1 antibody (TA380096) at dilution of 1:100. Blue: DAPI for nuclear staining.