

Product datasheet for **TA380095S**

Pancreatic Lipase (PNLIP) Rabbit Polyclonal Antibody

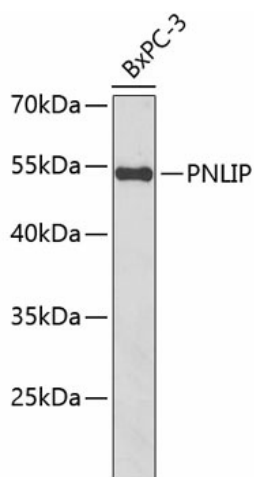
Product data:

Product Type:	Primary Antibodies
Applications:	ELISA, ICC/IF, IHC, WB
Recommended Dilution:	WB, 1:500 - 1:2000 IHC-P, 1:50 - 1:200 IF/ICC, 1:50 - 1:100 ELISA, Recommended starting concentration is 1 µg/mL. Please optimize the concentration based on your specific assay requirements.
Reactivity:	Human, Mouse
Modifications:	Unmodified
Host:	Rabbit
Isotype:	IgG
Clonality:	Polyclonal
Formulation:	Buffer: PBS with 0.02% sodium azide, 50% glycerol, pH 7.3.
Concentration:	lot specific
Purification:	Affinity purification
Conjugation:	Unconjugated
Storage:	Store at -20°C. Avoid freeze / thaw cycles.
Stability:	Shelf life: one year from despatch.
Predicted Protein Size:	51kDa
Gene Name:	pancreatic lipase
Database Link:	Entrez Gene 5406 Human P16233
Background:	This gene encodes a member of the lipase family of proteins. The encoded enzyme is secreted by the pancreas and hydrolyzes triglycerides in the small intestine, and is essential for the efficient digestion of dietary fats. Inhibition of the encoded enzyme may prevent high-fat diet-induced obesity in mice and result in weight loss in human patients with obesity. Mutations in this gene cause congenital pancreatic lipase deficiency, a rare disorder characterized by steatorrhea.

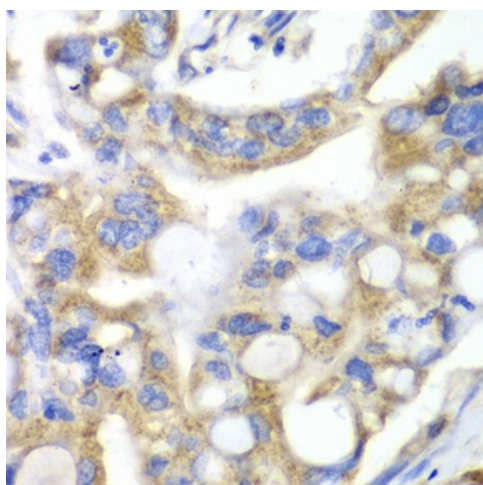

[View online »](#)

Synonyms: PL

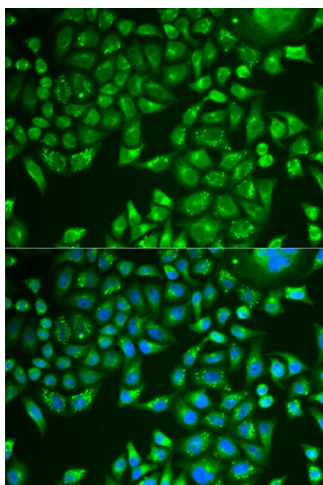
Product images:



Western blot analysis of lysates from BxPC-3 cells



Immunohistochemistry analysis of paraffin-embedded Human liver cancer using PNLIP Rabbit pAb ([TA380095]) at dilution of 1:100 (40x lens). Microwave antigen retrieval performed with 0.01M PBS Buffer (pH 7.2) prior to IHC staining.



Immunofluorescence analysis of U2OS cells using PNLIP Rabbit pAb ([TA380095]). Secondary antibody: Cy3-conjugated Goat anti-Rabbit IgG (H+L) (AS007) at 1:500 dilution. Blue: DAPI for nuclear staining.