

Product datasheet for **TA380093**

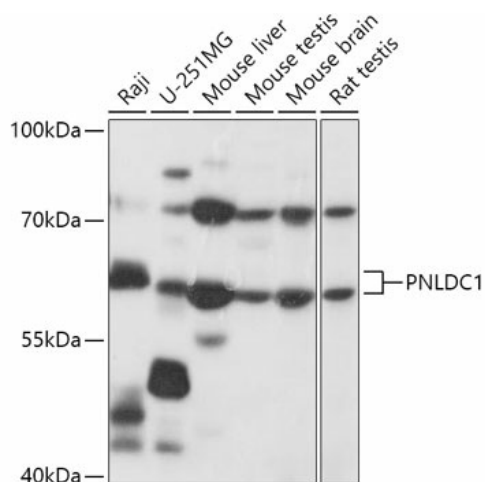
PNLDC1 Rabbit Polyclonal Antibody

Product data:

Product Type:	Primary Antibodies
Applications:	WB
Recommended Dilution:	WB,1:500 - 1:2000
Reactivity:	Human, Mouse, Rat
Modifications:	Unmodified
Host:	Rabbit
Isotype:	IgG
Clonality:	Polyclonal
Immunogen:	Recombinant fusion protein containing a sequence corresponding to amino acids 200-500 of human PNLDC1 (NP_775787.1).
Formulation:	Buffer: PBS with 0.02% sodium azide,50% glycerol,pH7.3.
Concentration:	lot specific
Purification:	Affinity purification
Conjugation:	Unconjugated
Storage:	Store at -20°C. Avoid freeze / thaw cycles.
Stability:	Shelf life: one year from despatch.
Gene Name:	PARN like, ribonuclease domain containing 1
Database Link:	Entrez Gene 154197 Human Q8NA58
Background:	3'-exoribonuclease that has a preference for poly(A tails of mRNAs, thereby efficiently degrading poly(A tails. Exonucleolytic degradation of the poly(A tail is often the first step in the decay of eukaryotic mRNAs and is also used to silence certain maternal mRNAs translationally during oocyte maturation and early embryonic development. May act as a regulator of multipotency in embryonic stem cells (By similarity.
Synonyms:	dj195P10.2; FLJ40240; MGC138451



[View online »](#)

Product images:

Western blot analysis of extracts of various cell lines, using PNLDC1 antibody (TA380093) at 1:1000 dilution. | Secondary antibody: HRP Goat Anti-Rabbit IgG (H+L) at 1:10000 dilution. | Lysates/proteins: 25ug per lane. | Blocking buffer: 3% nonfat dry milk in TBST. | Detection: ECL Basic Kit . | Exposure time: 15s.