

Product datasheet for **TA380074**

MCH (PMCH) Rabbit Polyclonal Antibody

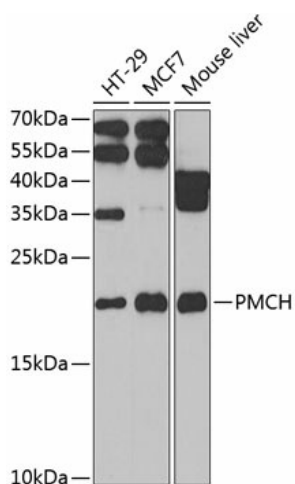
Product data:

Product Type:	Primary Antibodies
Applications:	WB
Recommended Dilution:	WB,1:500 - 1:2000
Reactivity:	Human, Mouse
Modifications:	Unmodified
Host:	Rabbit
Isotype:	IgG
Clonality:	Polyclonal
Immunogen:	Recombinant fusion protein containing a sequence corresponding to amino acids 22-165 of human PMCH (NP_002665.2).
Formulation:	Buffer: PBS with 0.02% sodium azide,50% glycerol,pH7.3.
Concentration:	lot specific
Purification:	Affinity purification
Conjugation:	Unconjugated
Storage:	Store at -20°C. Avoid freeze / thaw cycles.
Stability:	Shelf life: one year from despatch.
Predicted Protein Size:	18kDa
Gene Name:	pro-melanin concentrating hormone
Database Link:	Entrez Gene 5367 Human P20382
Background:	This gene encodes a preproprotein that is proteolytically processed to generate multiple protein products. These products include melanin-concentrating hormone (MCH), neuropeptide-glutamic acid-isoleucine (NEI), and neuropeptide-glycine-glutamic acid (NGE). Melanin-concentrating hormone is a 19-amino acid neuropeptide that stimulates hunger and may additionally regulate energy homeostasis, reproductive function, and sleep. Pseudogenes of this gene have been identified on chromosome 5.
Synonyms:	MCH



[View online »](#)

Product images:



Western blot analysis of extracts of various cell lines, using PMCH antibody (TA380074) at 1:1000 dilution. | Secondary antibody: HRP Goat Anti-Rabbit IgG (H+L) at 1:10000 dilution. | Lysates/proteins: 25ug per lane. | Blocking buffer: 3% nonfat dry milk in TBST. | Detection: ECL Basic Kit. | Exposure time: 10s.