

Product datasheet for **TA380069**

Plexin B1 (PLXNB1) Rabbit Polyclonal Antibody

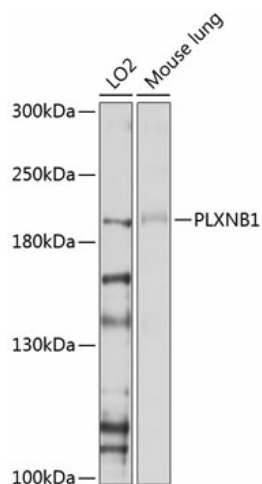
Product data:

Product Type:	Primary Antibodies
Applications:	WB
Recommended Dilution:	WB,1:500 - 1:2000
Reactivity:	Human, Mouse
Modifications:	Unmodified
Host:	Rabbit
Isotype:	IgG
Clonality:	Polyclonal
Immunogen:	Recombinant fusion protein containing a sequence corresponding to amino acids 250-470 of human PLXNB1 (NP_002664.2).
Formulation:	Buffer: PBS with 0.02% sodium azide,50% glycerol,pH7.3.
Concentration:	lot specific
Purification:	Affinity purification
Conjugation:	Unconjugated
Storage:	Store at -20°C. Avoid freeze / thaw cycles.
Stability:	Shelf life: one year from despatch.
Predicted Protein Size:	78kDa/214kDa/232kDa
Gene Name:	plexin B1
Database Link:	Entrez Gene 5364 Human O43157
Background:	Receptor for SEMA4D. Plays a role in GABAergic synapse development (By similarity. Mediates SEMA4A- and SEMA4D-dependent inhibitory synapse development (By similarity. Plays a role in RHOA activation and subsequent changes of the actin cytoskeleton. Plays a role in axon guidance, invasive growth and cell migration.
Synonyms:	KIAA0407; MGC149167; PLEXIN-B1; PLXN5; SEP



[View online »](#)

Product images:



Western blot analysis of extracts of various cell lines, using PLXNB1 antibody (TA380069) at 1:1000 dilution. | Secondary antibody: HRP Goat Anti-Rabbit IgG (H+L) at 1:10000 dilution. | Lysates/proteins: 25ug per lane. | Blocking buffer: 3% nonfat dry milk in TBST. | Detection: ECL Basic Kit . | Exposure time: 60s.