

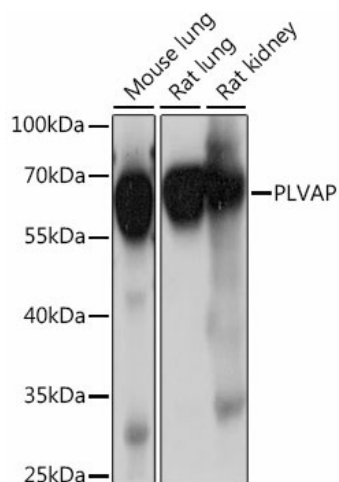
Product datasheet for **TA380064S**

PLVAP Rabbit Polyclonal Antibody

Product data:

Product Type:	Primary Antibodies
Applications:	ELISA, WB
Recommended Dilution:	WB, 1:500 - 1:2000 ELISA, Recommended starting concentration is 1 µg/mL. Please optimize the concentration based on your specific assay requirements.
Reactivity:	Mouse, Rat
Modifications:	Unmodified
Host:	Rabbit
Isotype:	IgG
Clonality:	Polyclonal
Formulation:	Buffer: PBS with 0.02% sodium azide, 50% glycerol, pH 7.3.
Concentration:	lot specific
Purification:	Affinity purification
Conjugation:	Unconjugated
Storage:	Store at -20°C. Avoid freeze / thaw cycles.
Stability:	Shelf life: one year from despatch.
Predicted Protein Size:	51kDa
Gene Name:	plasmalemma vesicle associated protein
Database Link:	Q9BX97
Background:	Predicted to enable identical protein binding activity. Involved in MAPK cascade; positive regulation of cellular extravasation; and tumor necrosis factor-mediated signaling pathway. Located in cell surface. Colocalizes with caveola. Implicated in congenital diarrhea.
Synonyms:	FELS; gp68; PV-1; PV1


[View online »](#)

Product images:


Western blot analysis of various lysates using PLVAP Rabbit pAb (TA380064) at 1:1000 dilution. Secondary antibody: HRP-conjugated Goat anti-Rabbit IgG (H+L) (AS014) at 1:10000 dilution. Lysates/proteins: 25µg per lane. Blocking buffer: 3% nonfat dry milk in TBST. Detection: ECL Basic Kit (RM00020). Exposure time: 10s.