

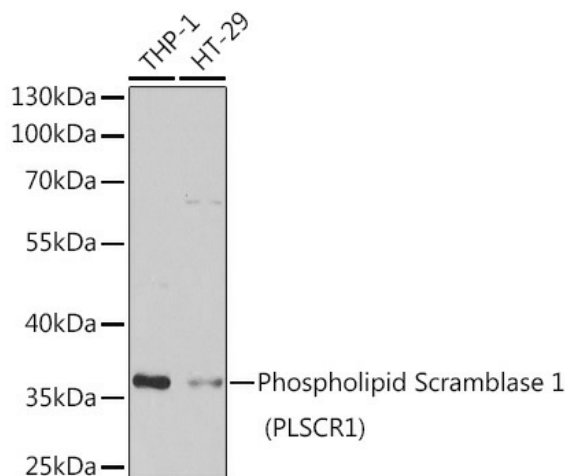
## Product datasheet for TA380061S

### Scramblase 1 (PLSCR1) Rabbit Polyclonal Antibody

#### Product data:

Product Type:	Primary Antibodies
Applications:	ELISA, WB
Recommended Dilution:	WB, 1:500 - 1:2000 ELISA, Recommended starting concentration is 1 µg/mL. Please optimize the concentration based on your specific assay requirements.
Reactivity:	Human
Modifications:	Unmodified
Host:	Rabbit
Isotype:	IgG
Clonality:	Polyclonal
Formulation:	Buffer: PBS with 0.02% sodium azide, 50% glycerol, pH 7.3.
Concentration:	lot specific
Purification:	Affinity purification
Conjugation:	Unconjugated
Storage:	Store at -20°C. Avoid freeze / thaw cycles.
Stability:	Shelf life: one year from despatch.
Predicted Protein Size:	35kDa
Gene Name:	phospholipid scramblase 1
Database Link:	<a href="#">Entrez Gene 5359 Human O15162</a>
Background:	This gene encodes a phospholipid scramblase family member. The encoded protein is involved in disruption of the asymmetrical distribution of phospholipids between the inner and outer leaflets of the plasma membrane, resulting in externalization of phosphatidylserine. This cell membrane disruption plays an important role in the blood coagulation cascade as well as macrophage clearing of apoptotic cells. The encoded protein has additionally been implicated in gene regulation and interferon-induced antiviral responses.
Synonyms:	MMTRA1B


[View online »](#)

**Product images:**


Western blot analysis of various lysates using Phospholipid Scramblase 1 (PLSCR1) Rabbit pAb ([TA380061]) at 1:1000 dilution. Secondary antibody: HRP-conjugated Goat anti-Rabbit IgG (H+L) (AS014) at 1:10000 dilution. Lysates/proteins: 25µg per lane. Blocking buffer: 3% nonfat dry milk in TBST. Detection: ECL Basic Kit (RM00020). Exposure time: 1s.