

Product datasheet for **TA380046**

PLK5 Rabbit Polyclonal Antibody

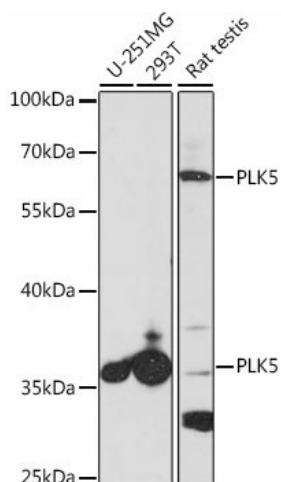
Product data:

| | |
|-------------------------|---|
| Product Type: | Primary Antibodies |
| Applications: | WB |
| Recommended Dilution: | WB,1:500 - 1:2000 |
| Reactivity: | Human, Rat |
| Modifications: | Unmodified |
| Host: | Rabbit |
| Isotype: | IgG |
| Clonality: | Polyclonal |
| Immunogen: | Recombinant fusion protein containing a sequence corresponding to amino acids 1-336 of human PLK5 (NP_001230008.1). |
| Formulation: | Buffer: PBS with 0.02% sodium azide,50% glycerol,pH7.3. |
| Concentration: | lot specific |
| Purification: | Affinity purification |
| Conjugation: | Unconjugated |
| Storage: | Store at -20°C. Avoid freeze / thaw cycles. |
| Stability: | Shelf life: one year from despatch. |
| Predicted Protein Size: | 32kDa/36kDa |
| Gene Name: | polo like kinase 5 |
| Database Link: | Entrez Gene 126520 Human Q496M5 |
| Background: | Inactive serine/threonine-protein kinase that plays a role in cell cycle progression and neuronal differentiation. |
| Synonyms: | 6330514A18Rik |



[View online »](#)

Product images:



Western blot analysis of extracts of various cell lines, using PLK5 antibody (TA380046) at 1:1000 dilution. | Secondary antibody: HRP Goat Anti-Rabbit IgG (H+L) at 1:10000 dilution. | Lysates/proteins: 25ug per lane. | Blocking buffer: 3% nonfat dry milk in TBST. | Detection: ECL Basic Kit. | Exposure time: 60s.