

## Product datasheet for **TA380024**

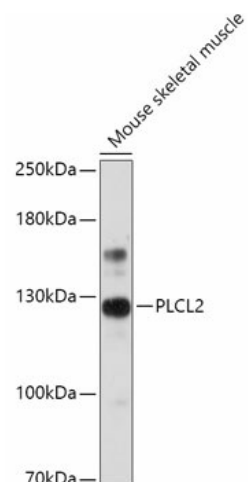
### PLCL2 Rabbit Polyclonal Antibody

#### Product data:

Product Type:	Primary Antibodies
Applications:	WB
Recommended Dilution:	WB,1:500 - 1:2000
Reactivity:	Mouse
Modifications:	Unmodified
Host:	Rabbit
Isotype:	IgG
Clonality:	Polyclonal
Immunogen:	Recombinant fusion protein containing a sequence corresponding to amino acids 130-300 of human PLCL2 (NP_055999.2).
Formulation:	Buffer: PBS with 0.02% sodium azide,50% glycerol,pH7.3.
Concentration:	lot specific
Purification:	Affinity purification
Conjugation:	Unconjugated
Storage:	Store at -20°C. Avoid freeze / thaw cycles.
Stability:	Shelf life: one year from despatch.
Gene Name:	phospholipase C like 2
Database Link:	<a href="#">Q9UPR0</a>
Background:	May play an role in the regulation of Ins(1,4,5)P <sub>3</sub> around the endoplasmic reticulum.
Synonyms:	FLJ13484; KIAA1092; OTTHUMP00000208053; PLC-L(2); PLC-L2; PLCE2



[View online »](#)

**Product images:**

Western blot analysis of extracts of Mouse skeletal muscle, using PLCL2 antibody (TA380024) at 1:1000 dilution. | Secondary antibody: HRP Goat Anti-Rabbit IgG (H+L) at 1:10000 dilution. | Lysates/proteins: 25ug per lane. | Blocking buffer: 3% nonfat dry milk in TBST. | Detection: ECL Basic Kit . | Exposure time: 30s.