

Product datasheet for **TA380022**

Phospholipase c eta 1 (PLCH1) Rabbit Polyclonal Antibody

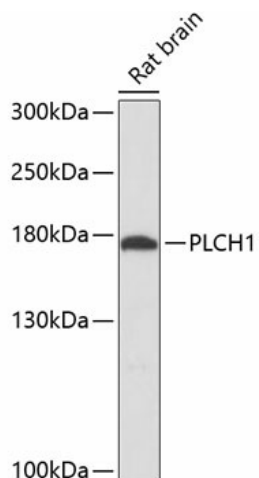
Product data:

| | |
|-------------------------|---|
| Product Type: | Primary Antibodies |
| Applications: | WB |
| Recommended Dilution: | WB,1:1000 - 1:3000 |
| Reactivity: | Rat |
| Modifications: | Unmodified |
| Host: | Rabbit |
| Isotype: | IgG |
| Clonality: | Polyclonal |
| Immunogen: | Recombinant fusion protein containing a sequence corresponding to amino acids 1100-1400 of human PLCH1 (NP_055811.1). |
| Formulation: | Buffer: PBS with 0.02% sodium azide,50% glycerol,pH7.3. |
| Concentration: | lot specific |
| Purification: | Affinity purification |
| Conjugation: | Unconjugated |
| Storage: | Store at -20°C. Avoid freeze / thaw cycles. |
| Stability: | Shelf life: one year from despatch. |
| Predicted Protein Size: | 114kDa/115kDa/184kDa/189kDa |
| Gene Name: | phospholipase C eta 1 |
| Database Link: | Q4KWH8 |
| Background: | PLCH1 is a member of the PLC-eta family of the phosphoinositide-specific phospholipase C (PLC) superfamily of enzymes that cleave phosphatidylinositol 4,5-bisphosphate (PtdIns(4,5)P ₂) to generate second messengers inositol 1,4,5-trisphosphate (IP ₃) and diacylglycerol (DAG) (Hwang et al., 2005 [PubMed 15702972]).[supplied by OMIM, Jun 2009] |
| Synonyms: | DKFZp434C1372; KIAA1069; MGC117152; PLC-eta-1; PLC-L3; PLCeta1; PLCL3 |



[View online »](#)

Product images:



Western blot analysis of extracts of rat brain, using PLCH1 antibody (TA380022) at 1:3000 dilution. | Secondary antibody: HRP Goat Anti-Rabbit IgG (H+L) at 1:10000 dilution. | Lysates/proteins: 25ug per lane. | Blocking buffer: 3% nonfat dry milk in TBST. | Detection: ECL Basic Kit . | Exposure time: 90s.