

Product datasheet for **TA380020**

PLCG 2 (PLCG2) Rabbit Polyclonal Antibody

Product data:

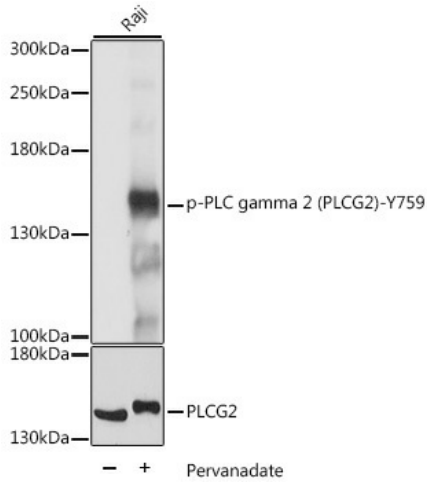
Product Type:	Primary Antibodies
Applications:	WB
Recommended Dilution:	WB,1:500 - 1:2000
Reactivity:	Human
Modifications:	Phospho Y759
Host:	Rabbit
Isotype:	IgG
Clonality:	Polyclonal
Immunogen:	A synthetic phosphorylated peptide around Y759 of human PLC gamma 2 (PLCG2) (NP_002652.2).
Formulation:	Buffer: PBS with 0.02% sodium azide,50% glycerol,pH7.3.
Concentration:	lot specific
Purification:	Affinity purification
Conjugation:	Unconjugated
Storage:	Store at -20°C. Avoid freeze / thaw cycles.
Stability:	Shelf life: one year from despatch.
Predicted Protein Size:	147kDa
Gene Name:	phospholipase C gamma 2
Database Link:	Entrez Gene 5336 Human P16885
Background:	The protein encoded by this gene is a transmembrane signaling enzyme that catalyzes the conversion of 1-phosphatidyl-1D-myo-inositol 4,5-bisphosphate to 1D-myo-inositol 1,4,5-trisphosphate (IP3) and diacylglycerol (DAG) using calcium as a cofactor. IP3 and DAG are second messenger molecules important for transmitting signals from growth factor receptors and immune system receptors across the cell membrane. Mutations in this gene have been found in autoinflammation, antibody deficiency, and immune dysregulation syndrome and familial cold autoinflammatory syndrome 3.



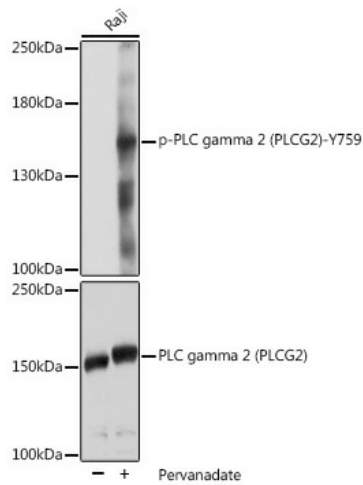
[View online »](#)

Synonyms: PLC-gamma-2; PLC-IV

Product images:



Western blot analysis of extracts of Raji cells, using Phospho-PLC gamma 2 (PLCG2)-Y759 antibody (TA380020) at 1:2000 dilution or PLC gamma 2 (PLCG2) antibody (A2182). Raji cells were treated by Pervanadate (1 mM) at 37°C for 30 minutes. |Secondary antibody: HRP Goat Anti-Rabbit IgG (H+L) at 1:10000 dilution. |Lysates/proteins: 25ug per lane. |Blocking buffer: 3% BSA. |Detection: ECL Basic Kit . |Exposure time: 1s.



Western blot analysis of extracts of Raji cells, using Phospho-PLC gamma 2 (PLCG2)-Y759 pAb (TA380020) at 1:2000 dilution or PLC gamma 2 (PLCG2) antibody (A2182).Raji cells were treated by Pervanadate (1 mM) at 37°C for 30 minutes. |Secondary antibody: HRP Goat Anti-Rabbit IgG (H+L) at 1:10000 dilution. |Lysates/proteins: 25ug per lane. |Blocking buffer: 3% BSA. |Detection: ECL Basic Kit . |Exposure time: 1s.