

## Product datasheet for **TA380019S**

### Phospholipase C gamma 1 (PLCG1) Rabbit Polyclonal Antibody

#### Product data:

Product Type:	Primary Antibodies
Applications:	ELISA, IHC, WB
Recommended Dilution:	WB, 1:500 - 1:2000 IHC-P, 1:10 - 1:100 ELISA, Recommended starting concentration is 1 µg/mL. Please optimize the concentration based on your specific assay requirements.
Reactivity:	Human, Mouse, Rat
Modifications:	Phospho S1248
Host:	Rabbit
Isotype:	IgG
Clonality:	Polyclonal
Formulation:	Buffer: PBS with 0.02% sodium azide, 50% glycerol, pH 7.3.
Concentration:	lot specific
Purification:	Affinity purification
Conjugation:	Unconjugated
Storage:	Store at -20°C. Avoid freeze / thaw cycles.
Stability:	Shelf life: one year from despatch.
Predicted Protein Size:	149kDa
Gene Name:	phospholipase C gamma 1
Database Link:	<a href="#">Entrez Gene 5335 Human P19174</a>

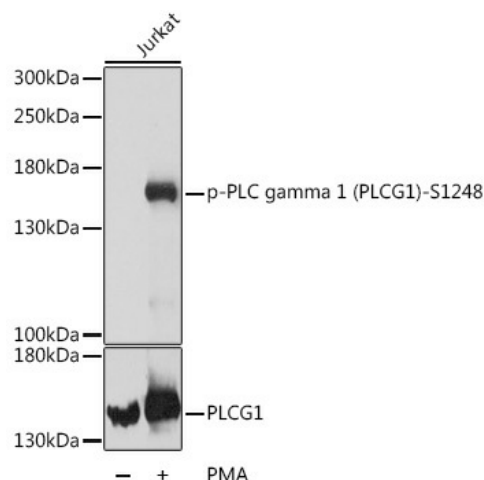

[View online »](#)

**Background:**

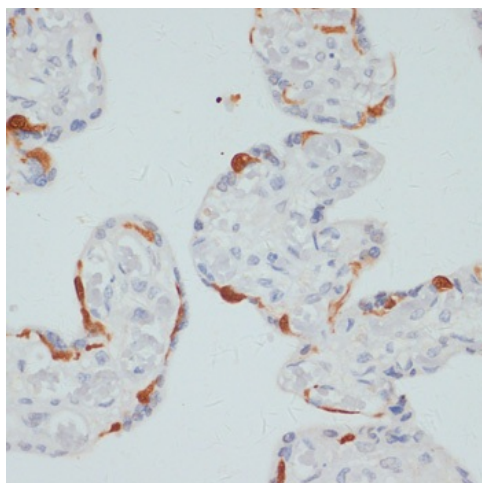
The protein encoded by this gene catalyzes the formation of inositol 1,4,5-trisphosphate and diacylglycerol from phosphatidylinositol 4,5-bisphosphate. This reaction uses calcium as a cofactor and plays an important role in the intracellular transduction of receptor-mediated tyrosine kinase activators. For example, when activated by SRC, the encoded protein causes the Ras guanine nucleotide exchange factor RasGRP1 to translocate to the Golgi, where it activates Ras. Also, this protein has been shown to be a major substrate for heparin-binding growth factor 1 (acidic fibroblast growth factor)-activated tyrosine kinase. Two transcript variants encoding different isoforms have been found for this gene.

**Synonyms:**

1-phosphatidyl-D-myo-inositol-4,5-bisphosphate; inositoltrisphosphohydrolase; NCKAP3; OTTHUMP00000178982; PLC-148; PLC-gamma-1; PLC-II; PLC1; PLC148; PLCgamma1

**Product images:**


Western blot analysis of lysates from Jurkat cells



Immunohistochemistry analysis of paraffin-embedded Human placenta using Phospho-PLC gamma 1 (PLCG1)-S1248 Rabbit pAb ([TA380019]) at dilution of 1:100 (40x lens). Microwave antigen retrieval performed with 0.01M Tris/EDTA Buffer (pH 9.0) prior to IHC staining.