

## Product datasheet for **TA379996S**

### PLA2G3 Rabbit Polyclonal Antibody

#### Product data:

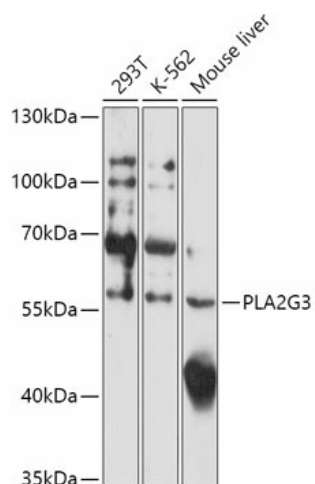
|                       |   |
|-----------------------|---|
| Product Type:         | Primary Antibodies                                      |
| Applications:         | WB  |
| Recommended Dilution: | WB,1:500 - 1:2000                                       |
| Reactivity:           | Human, Mouse  |
| Modifications:        | Unmodified  |
| Host:                 | Rabbit  |
| Isotype:              | IgG   |
| Clonality:            | Polyclonal  |
| Immunogen:            | A synthetic peptide of Human PLA2G3.                    |
| Formulation:          | Buffer: PBS with 0.02% sodium azide,50% glycerol,pH7.3. |
| Concentration:        | lot specific  |
| Purification:         | Affinity purification                                   |
| Conjugation:          | Unconjugated  |
| Storage:              | Store at -20°C. Avoid freeze / thaw cycles.             |
| Stability:            | Shelf life: one year from despatch.                     |
| Gene Name:            | phospholipase A2 group III                              |
| Database Link:        | <a href="#">Entrez Gene 50487 Human Q9NZ20</a>          |

**Background:** This gene encodes a protein that belongs to the secreted phospholipase A2 family, whose members include the bee venom enzyme. The encoded enzyme functions in lipid metabolism and catalyzes the calcium-dependent hydrolysis of the sn-2 acyl bond of phospholipids to release arachidonic acid and lysophospholipids. This enzyme acts as a negative regulator of ciliogenesis, and may play a role in cancer development by stimulating tumor cell growth and angiogenesis. This gene is associated with oxidative stress, and polymorphisms in this gene are linked to risk for Alzheimer's disease. [provided by RefSeq, Apr 2014]

**Synonyms:** GIII-SPLA2; sPLA2-III; SPLA2III



[View online »](#)

**Product images:**

Western blot analysis of extracts of various cell lines, using PLA2G3 antibody ([TA379996]) at 1:1000 dilution. | Secondary antibody: HRP Goat Anti-Rabbit IgG (H+L) at 1:10000 dilution. | Lysates/proteins: 25ug per lane. | Blocking buffer: 3% nonfat dry milk in TBST. | Detection: ECL Basic Kit . | Exposure time: 3min.