

Product datasheet for **TA379996**

PLA2G3 Rabbit Polyclonal Antibody

Product data:

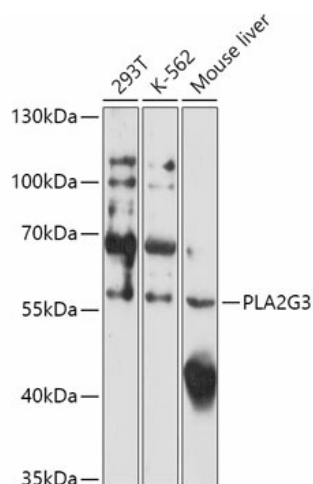
Product Type:	Primary Antibodies
Applications:	WB
Recommended Dilution:	WB,1:500 - 1:2000
Reactivity:	Human, Mouse
Modifications:	Unmodified
Host:	Rabbit
Isotype:	IgG
Clonality:	Polyclonal
Immunogen:	A synthetic peptide of Human PLA2G3.
Formulation:	Buffer: PBS with 0.02% sodium azide,50% glycerol,pH7.3.
Concentration:	lot specific
Purification:	Affinity purification
Conjugation:	Unconjugated
Storage:	Store at -20°C. Avoid freeze / thaw cycles.
Stability:	Shelf life: one year from despatch.
Gene Name:	phospholipase A2 group III
Database Link:	Entrez Gene 50487 Human Q9NZ20

Background: This gene encodes a protein that belongs to the secreted phospholipase A2 family, whose members include the bee venom enzyme. The encoded enzyme functions in lipid metabolism and catalyzes the calcium-dependent hydrolysis of the sn-2 acyl bond of phospholipids to release arachidonic acid and lysophospholipids. This enzyme acts as a negative regulator of ciliogenesis, and may play a role in cancer development by stimulating tumor cell growth and angiogenesis. This gene is associated with oxidative stress, and polymorphisms in this gene are linked to risk for Alzheimer's disease. [provided by RefSeq, Apr 2014]

Synonyms: GIII-SPLA2; sPLA2-III; SPLA2III



[View online »](#)

Product images:

Western blot analysis of extracts of various cell lines, using PLA2G3 antibody (TA379996) at 1:1000 dilution. | Secondary antibody: HRP Goat Anti-Rabbit IgG (H+L) at 1:10000 dilution. | Lysates/proteins: 25ug per lane. | Blocking buffer: 3% nonfat dry milk in TBST. | Detection: ECL Basic Kit . | Exposure time: 3min.