

Product datasheet for **TA379989**

PLA2G10 Rabbit Polyclonal Antibody

Product data:

| | |
|-------------------------|---|
| Product Type: | Primary Antibodies |
| Applications: | WB |
| Recommended Dilution: | WB,1:500 - 1:2000 |
| Reactivity: | Human |
| Modifications: | Unmodified |
| Host: | Rabbit |
| Isotype: | IgG |
| Clonality: | Polyclonal |
| Immunogen: | A synthetic peptide corresponding to a sequence within amino acids 50-150 of human PLA2G10 (NP_003552.1). |
| Formulation: | Buffer: PBS with 0.02% sodium azide,50% glycerol,pH7.3. |
| Concentration: | lot specific |
| Purification: | Affinity purification |
| Conjugation: | Unconjugated |
| Storage: | Store at -20°C. Avoid freeze / thaw cycles. |
| Stability: | Shelf life: one year from despatch. |
| Predicted Protein Size: | 18kDa |
| Gene Name: | phospholipase A2 group X |
| Database Link: | Entrez Gene 8399 Human O15496 |

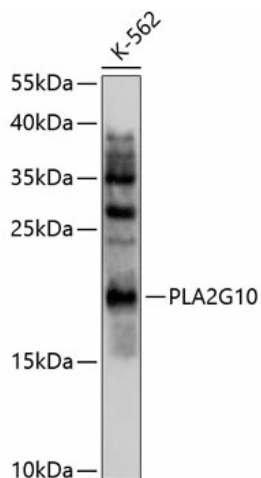
Background: This gene encodes a member of the phospholipase A2 family of proteins. Alternative splicing results in multiple transcript variants, at least one of which encodes a preproprotein that is proteolytically processed to generate the mature enzyme. This calcium-dependent enzyme hydrolyzes glycerophospholipids to produce free fatty acids and lysophospholipids. In one example, this enzyme catalyzes the release of arachidonic acid from cell membrane phospholipids, thus playing a role in the production of various inflammatory lipid mediators, such as prostaglandins. The encoded protein may promote the survival of breast cancer cells through its role in lipid metabolism.



[View online »](#)

Synonyms: GXPLA2; GXPLA2; MGC119918; MGC119919; MGC133367; SPLA2; sPLA2-X

Product images:



Western blot analysis of extracts of K562 cells, using PLA2G10 antibody (TA379989) at 1:1000 dilution. | Secondary antibody: HRP Goat Anti-Rabbit IgG (H+L) at 1:10000 dilution. | Lysates/proteins: 25ug per lane. | Blocking buffer: 3% nonfat dry milk in TBST. | Detection: ECL Basic Kit . | Exposure time: 90s.