

Product datasheet for **TA379987S**

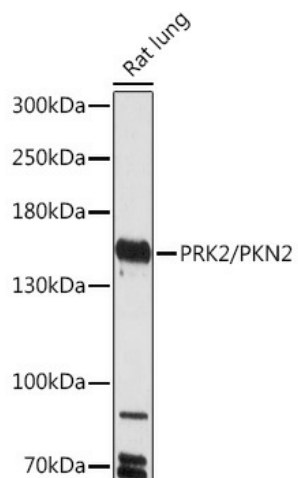
PKN2 Rabbit Polyclonal Antibody

Product data:

Product Type:	Primary Antibodies
Applications:	ELISA, WB
Recommended Dilution:	WB, 1:500 - 1:2000 ELISA, Recommended starting concentration is 1 µg/mL. Please optimize the concentration based on your specific assay requirements.
Reactivity:	Mouse, Rat
Host:	Rabbit
Isotype:	IgG
Clonality:	Polyclonal
Formulation:	Buffer: PBS with 0.02% sodium azide, 50% glycerol, pH 7.3.
Concentration:	lot specific
Purification:	Affinity purification
Conjugation:	Unconjugated
Storage:	Store at -20°C. Avoid freeze / thaw cycles.
Stability:	Shelf life: one year from despatch.
Predicted Protein Size:	112kDa
Gene Name:	protein kinase N2
Database Link:	Q16513
Background:	Enables RNA polymerase binding activity; histone deacetylase binding activity; and protein serine/threonine kinase activity. Involved in several processes, including apical junction assembly; positive regulation of cell cycle; and positive regulation of viral genome replication. Located in several cellular components, including cleavage furrow; cytoskeleton; and midbody.
Synonyms:	MGC71074; MGC150606; Pak-2; PAK2; PRK2; PRKCL2; PRO2042

[View online »](#)

Product images:



Western blot analysis of lysates from Rat lung