

Product datasheet for TA379975S

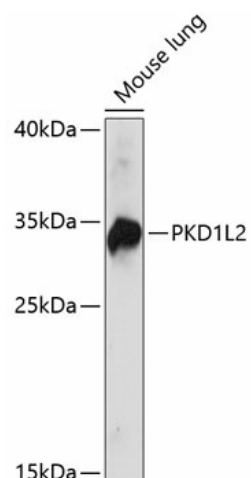
PKD1L2 Rabbit Polyclonal Antibody

Product data:

Product Type:	Primary Antibodies
Applications:	ELISA, WB
Recommended Dilution:	WB, 1:500 - 1:2000 ELISA, Recommended starting concentration is 1 µg/mL. Please optimize the concentration based on your specific assay requirements.
Reactivity:	Mouse
Modifications:	Unmodified
Host:	Rabbit
Isotype:	IgG
Clonality:	Polyclonal
Formulation:	Buffer: PBS with 0.02% sodium azide, 50% glycerol, pH 7.3.
Concentration:	lot specific
Purification:	Affinity purification
Conjugation:	Unconjugated
Storage:	Store at -20°C. Avoid freeze / thaw cycles.
Stability:	Shelf life: one year from despatch.
Predicted Protein Size:	273kDa
Gene Name:	polycystin 1 like 2 (gene/pseudogene)
Database Link:	Q7Z442
Background:	This gene encodes a member of the polycystin protein family. This protein may function as a G-protein-coupled component or regulator of cation channel pores. The long isoform of this protein contains 11 transmembrane domains, a latrophilin/CL-1-like GPCR proteolytic site (GPS) domain, and a polycystin-1, lipoxigenase, alpha-toxin (PLAT) domain. Alternative splicing results in multiple transcript variants encoding distinct isoforms. This gene is a polymorphic pseudogene in humans.
Synonyms:	DKFZp686J19100; FLJ45333; KIAA1879; PC1L2; Polycystin-1L2


[View online »](#)

Product images:



Western blot analysis of lysates from mouse lung