

Product datasheet for **TA379975**

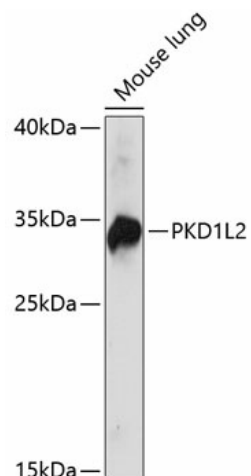
PKD1L2 Rabbit Polyclonal Antibody

Product data:

Product Type:	Primary Antibodies
Applications:	WB
Recommended Dilution:	WB,1:500 - 1:2000
Reactivity:	Mouse
Modifications:	Unmodified
Host:	Rabbit
Isotype:	IgG
Clonality:	Polyclonal
Immunogen:	Recombinant fusion protein containing a sequence corresponding to amino acids 1-306 of human PKD1L2 (NP_001265352.1).
Formulation:	Buffer: PBS with 0.02% sodium azide,50% glycerol,pH7.3.
Concentration:	lot specific
Purification:	Affinity purification
Conjugation:	Unconjugated
Storage:	Store at -20°C. Avoid freeze / thaw cycles.
Stability:	Shelf life: one year from despatch.
Predicted Protein Size:	26kDa/32kDa/107kDa/197kDa/272kDa
Gene Name:	polycystin 1 like 2 (gene/pseudogene)
Database Link:	Q7Z442
Background:	This gene encodes a member of the polycystin protein family. The encoded protein contains 11 transmembrane domains, a latrophilin/CL-1-like GPCR proteolytic site (GPS) domain, and a polycystin-1, lipoxigenase, alpha-toxin (PLAT) domain. This protein may function as a component of cation channel pores. This gene appears to be a polymorphic pseudogene in humans, where some individuals contain a non-functional allele. Alternative splicing results in multiple transcript variants.
Synonyms:	DKFZp686j19100; FLJ45333; KIAA1879; PC1L2; Polycystin-1L2



[View online »](#)

Product images:

Western blot analysis of extracts of mouse lung, using PKD1L2 antibody (TA379975) at 1:1000 dilution. | Secondary antibody: HRP Goat Anti-Rabbit IgG (H+L) at 1:10000 dilution. | Lysates/proteins: 25ug per lane. | Blocking buffer: 3% nonfat dry milk in TBST. | Detection: ECL Basic Kit . | Exposure time: 30s.