

Product datasheet for **TA379972S**

Piwil2 Rabbit Polyclonal Antibody

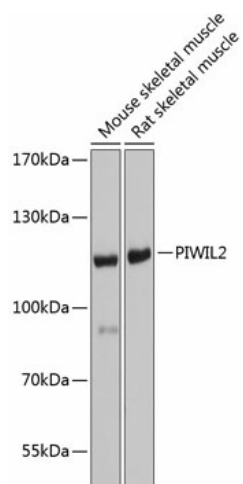
Product data:

Product Type:	Primary Antibodies
Applications:	WB
Recommended Dilution:	WB,1:1000 - 1:3000
Reactivity:	Mouse, Rat
Modifications:	Unmodified
Host:	Rabbit
Isotype:	IgG
Clonality:	Polyclonal
Immunogen:	Recombinant protein of mouse PIWIL2
Formulation:	Buffer: PBS with 0.02% sodium azide,50% glycerol,pH7.3.
Concentration:	lot specific
Purification:	Affinity purification
Conjugation:	Unconjugated
Storage:	Store at -20°C. Avoid freeze / thaw cycles.
Stability:	Shelf life: one year from despatch.
Predicted Protein Size:	105kDa/109kDa
Gene Name:	piwi-like RNA-mediated gene silencing 2
Database Link:	Entrez Gene 57746 Mouse Q8CDG1
Synonyms:	CT80; FLJ10351; HILI; Hiwi-like; MGC133049; Mili; PIWIL1L



[View online »](#)

Product images:



Western blot analysis of extracts of various cell lines, using PIWIL2 antibody ([TA379972]) at 1:1000 dilution. | Secondary antibody: HRP Goat Anti-Rabbit IgG (H+L) at 1:10000 dilution. | Lysates/proteins: 25ug per lane. | Blocking buffer: 3% nonfat dry milk in TBST. | Detection: ECL Basic Kit . | Exposure time: 5s.