

## Product datasheet for **TA379964S**

### **PITPN (PITPNA) Rabbit Polyclonal Antibody**

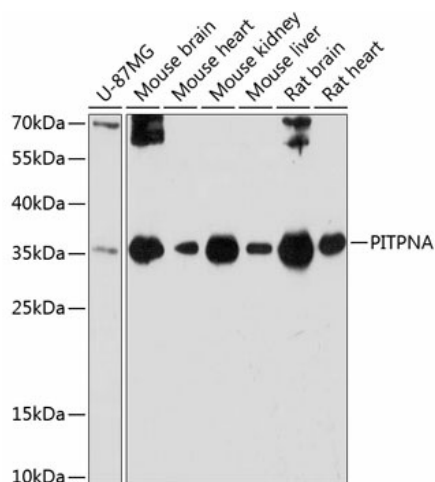
#### **Product data:**

<b>Product Type:</b>	Primary Antibodies
<b>Applications:</b>	ICC/IF, WB
<b>Recommended Dilution:</b>	WB, 1:500 - 1:2000 IF, 1:50 - 1:200
<b>Reactivity:</b>	Human, Mouse, Rat
<b>Modifications:</b>	Unmodified
<b>Host:</b>	Rabbit
<b>Isotype:</b>	IgG
<b>Clonality:</b>	Polyclonal
<b>Immunogen:</b>	Recombinant fusion protein containing a sequence corresponding to amino acids 211-270 of human PITPNA (NP_006215.1).
<b>Formulation:</b>	Buffer: PBS with 0.02% sodium azide, 50% glycerol, pH 7.3.
<b>Concentration:</b>	lot specific
<b>Purification:</b>	Affinity purification
<b>Conjugation:</b>	Unconjugated
<b>Storage:</b>	Store at -20°C. Avoid freeze / thaw cycles.
<b>Stability:</b>	Shelf life: one year from despatch.
<b>Predicted Protein Size:</b>	31kDa
<b>Gene Name:</b>	phosphatidylinositol transfer protein alpha
<b>Database Link:</b>	<a href="#">Entrez Gene 5306 Human Q00169</a>
<b>Background:</b>	This gene encodes a member of a family of lipid-binding proteins that transfer molecules of phosphatidylinositol or phosphatidylcholine between membrane surfaces. The protein is implicated in phospholipase C signaling and in the production of phosphatidylinositol 3,4,5-trisphosphate (PIP3) by phosphoinositide-3-kinase.
<b>Synonyms:</b>	MGC99649; PI-TP-alpha; PI-TPalpha; PITPN; PtdInsTP; VIB1A

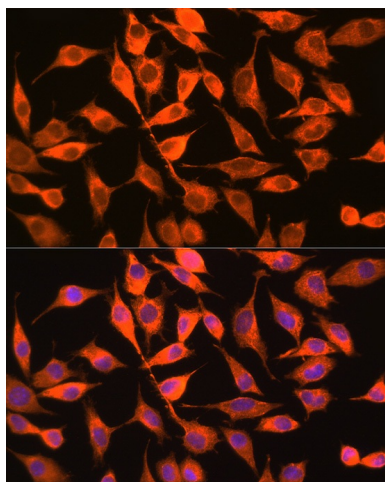


[View online »](#)

Product images:



Western blot analysis of extracts of various cell lines, using PITPNA antibody ([TA379964]) at 1:3000 dilution. | Secondary antibody: HRP Goat Anti-Rabbit IgG (H+L) at 1:10000 dilution. | Lysates/proteins: 25ug per lane. | Blocking buffer: 3% nonfat dry milk in TBST. | Detection: ECL Basic Kit . | Exposure time: 60s.



Immunofluorescence analysis of L929 cells using PITPNA Rabbit pAb ([TA379964]) at dilution of 1:100 (40x lens). Blue: DAPI for nuclear staining.