

Product datasheet for **TA379961S**

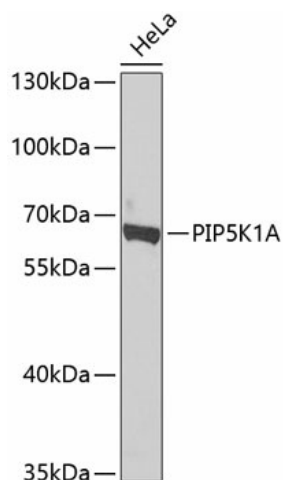
PIP5K1 alpha (PIP5K1A) Rabbit Polyclonal Antibody

Product data:

Product Type:	Primary Antibodies
Applications:	ELISA, IHC, WB
Recommended Dilution:	WB, 1:500 - 1:2000 IHC-P, 1:50 - 1:200 ELISA, Recommended starting concentration is 1 µg/mL. Please optimize the concentration based on your specific assay requirements.
Reactivity:	Human, Mouse
Modifications:	Unmodified
Host:	Rabbit
Isotype:	IgG
Clonality:	Polyclonal
Formulation:	Buffer: PBS with 0.02% sodium azide, 50% glycerol, pH 7.3.
Concentration:	lot specific
Purification:	Affinity purification
Conjugation:	Unconjugated
Storage:	Store at -20°C. Avoid freeze / thaw cycles.
Stability:	Shelf life: one year from despatch.
Predicted Protein Size:	63kDa
Gene Name:	phosphatidylinositol-4-phosphate 5-kinase type 1 alpha
Database Link:	Entrez Gene 8394 Human Q99755
Background:	Enables 1-phosphatidylinositol-4-phosphate 5-kinase activity and kinase binding activity. Involved in several processes, including activation of GTPase activity; focal adhesion assembly; and ruffle assembly. Located in several cellular components, including lamellipodium; nuclear speck; and ruffle membrane. Colocalizes with mRNA cleavage and polyadenylation specificity factor complex.
Synonyms:	PIP5K1alpha


[View online »](#)

Product images:



Western blot analysis of lysates from HeLa cells