

## Product datasheet for **TA379961**

### PIP5K1 alpha (PIP5K1A) Rabbit Polyclonal Antibody

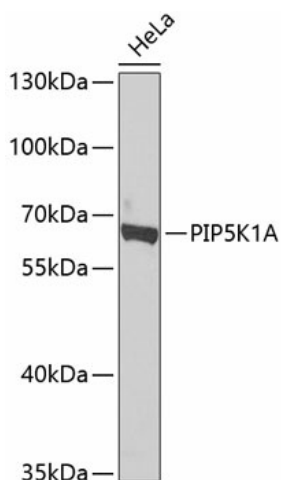
#### Product data:

Product Type:	Primary Antibodies
Applications:	IHC, WB
Recommended Dilution:	WB,1:500 - 1:2000 IHC,1:50 - 1:200
Reactivity:	Human, Mouse
Modifications:	Unmodified
Host:	Rabbit
Isotype:	IgG
Clonality:	Polyclonal
Immunogen:	Recombinant fusion protein containing a sequence corresponding to amino acids 231-500 of human PIP5K1A (NP_001129109.1).
Formulation:	Buffer: PBS with 0.02% sodium azide,50% glycerol,pH7.3.
Concentration:	lot specific
Purification:	Affinity purification
Conjugation:	Unconjugated
Storage:	Store at -20°C. Avoid freeze / thaw cycles.
Stability:	Shelf life: one year from despatch.
Predicted Protein Size:	56kDa/58kDa/61kDa/62kDa
Gene Name:	phosphatidylinositol-4-phosphate 5-kinase type 1 alpha
Database Link:	<a href="#">Entrez Gene 8394 Human Q99755</a>
Synonyms:	PIP5KIalpha



[View online »](#)

## Product images:



Western blot analysis of extracts of HeLa cells, using PIP5K1A antibody (TA379961) at 1:1000 dilution. | Secondary antibody: HRP Goat Anti-Rabbit IgG (H+L) at 1:10000 dilution. | Lysates/proteins: 25ug per lane. | Blocking buffer: 3% nonfat dry milk in TBST. | Detection: ECL Basic Kit . | Exposure time: 90s.