

Product datasheet for **TA379929**

PI 3 Kinase catalytic subunit alpha (PIK3CA) Rabbit Polyclonal Antibody

Product data:

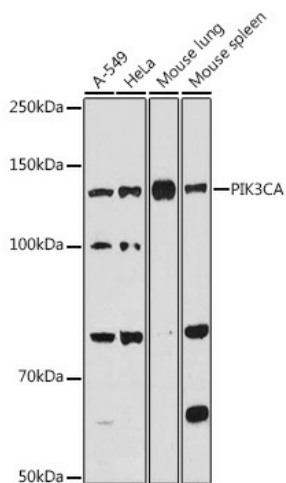
Product Type:	Primary Antibodies
Applications:	ICC/IF, IHC, WB
Recommended Dilution:	WB,1:500 - 1:2000 IHC,1:50 - 1:100 IF,1:50 - 1:100
Reactivity:	Human, Mouse, Rat
Modifications:	Unmodified
Host:	Rabbit
Isotype:	IgG
Clonality:	Polyclonal
Immunogen:	Recombinant fusion protein containing a sequence corresponding to amino acids 401-600 of human PIK3CA (NP_006209.2).
Formulation:	Buffer: PBS with 0.05% proclin300, 50% glycerol, pH7.3.
Concentration:	lot specific
Purification:	Affinity purification
Conjugation:	Unconjugated
Storage:	Store at -20°C. Avoid freeze / thaw cycles.
Stability:	Shelf life: one year from despatch.
Predicted Protein Size:	124kDa
Gene Name:	phosphatidylinositol-4,5-bisphosphate 3-kinase catalytic subunit alpha
Database Link:	Entrez Gene 5290 Human P42336
Background:	Phosphatidylinositol 3-kinase is composed of an 85 kDa regulatory subunit and a 110 kDa catalytic subunit. The protein encoded by this gene represents the catalytic subunit, which uses ATP to phosphorylate PtdIns, PtdIns4P and PtdIns(4,5)P2. This gene has been found to be oncogenic and has been implicated in cervical cancers. A pseudogene of this gene has been defined on chromosome 22.



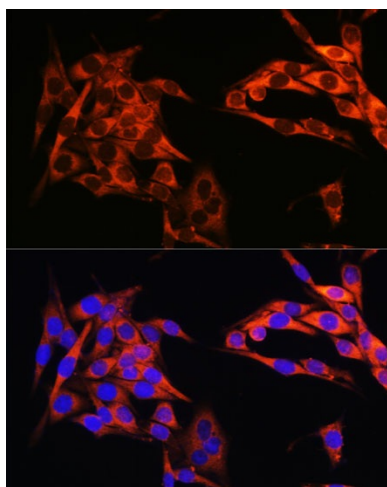
[View online »](#)

Synonyms: MGC142161; MGC142163; p110-alpha; PI3K

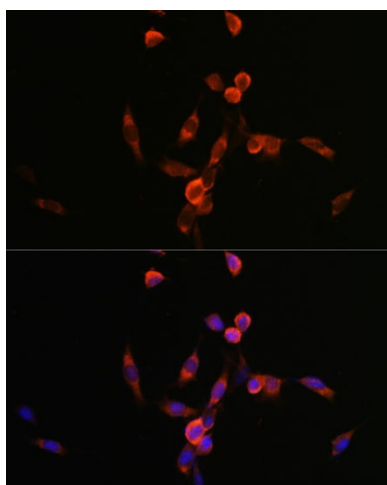
Product images:



Western blot analysis of extracts of various cell lines, using PIK3CA antibody (TA379929) at 1:1000 dilution. | Secondary antibody: HRP Goat Anti-Rabbit IgG (H+L) at 1:10000 dilution. | Lysates/proteins: 25ug per lane. | Blocking buffer: 3% nonfat dry milk in TBST. | Detection: ECL Basic Kit. | Exposure time: 180s.



Immunofluorescence analysis of HeLa cells using PIK3CA antibody (TA379929) at dilution of 1:100. Blue: DAPI for nuclear staining.



Immunofluorescence analysis of NIH/3T3 cells using PIK3CA antibody (TA379929) at dilution of 1:100. Blue: DAPI for nuclear staining.