

Product datasheet for **TA379915S**

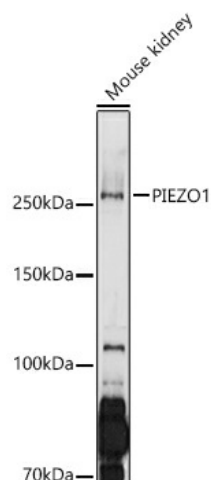
FAM38A (PIEZO1) Rabbit Polyclonal Antibody

Product data:

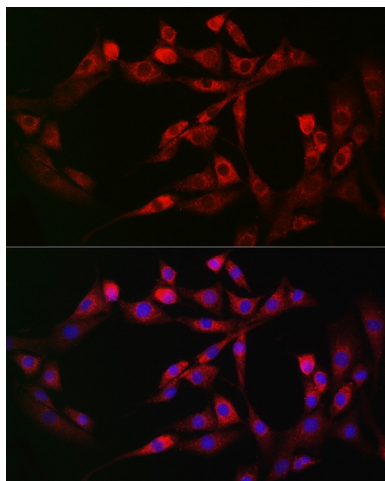
Product Type:	Primary Antibodies
Applications:	ELISA, ICC/IF, WB
Recommended Dilution:	WB, 1:500 - 1:1000 IF/ICC, 1:50 - 1:200 ELISA, Recommended starting concentration is 1 µg/mL. Please optimize the concentration based on your specific assay requirements.
Reactivity:	Human, Mouse, Rat
Modifications:	Unmodified
Host:	Rabbit
Isotype:	IgG
Clonality:	Polyclonal
Formulation:	Buffer: PBS with 0.02% sodium azide, 50% glycerol, pH 7.3.
Concentration:	lot specific
Purification:	Affinity purification
Conjugation:	Unconjugated
Storage:	Store at -20°C. Avoid freeze / thaw cycles.
Stability:	Shelf life: one year from despatch.
Predicted Protein Size:	287kDa
Gene Name:	piezo type mechanosensitive ion channel component 1
Database Link:	Entrez Gene 9780 Human Q92508
Background:	The protein encoded by this gene is a mechanically-activated ion channel that links mechanical forces to biological signals. The encoded protein contains 36 transmembrane domains and functions as a homotetramer. Defects in this gene have been associated with dehydrated hereditary stomatocytosis.
Synonyms:	9630020g22; Fam38a; mKIAA0233


[View online »](#)

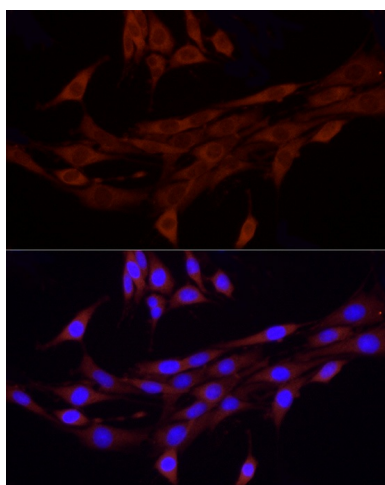
Product images:



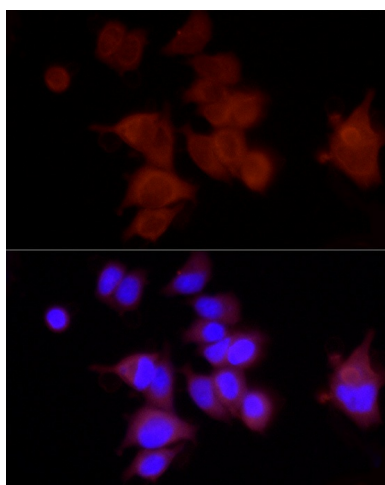
Western blot analysis of lysates from MCF7 cells



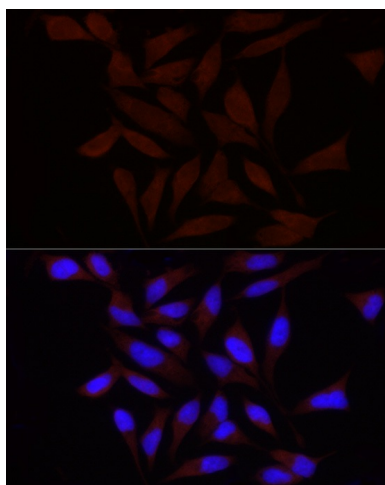
Immunofluorescence analysis of NIH-3T3 cells using FAM38A/PIEZO1 Rabbit pAb ([TA379915]) at dilution of 1:200 (40x lens). Secondary antibody: Cy3-conjugated Goat anti-Rabbit IgG (H+L) (AS007) at 1:500 dilution. Blue: DAPI for nuclear staining.



Immunofluorescence analysis of PC-12 using FAM38A/PIEZO1 Rabbit pAb ([TA379915]) at dilution of 1:100 (40x lens). Blue: DAPI for nuclear staining.



Immunofluorescence analysis of MCF-7 using FAM38A/PIEZO1 Rabbit pAb ([TA379915]) at dilution of 1:100 (40x lens). Blue: DAPI for nuclear staining.



Immunofluorescence analysis of HeLa using FAM38A/PIEZO1 Rabbit pAb ([TA379915]) at dilution of 1:100 (40x lens). Blue: DAPI for nuclear staining.