

## Product datasheet for **TA379913S**

### PID1 Rabbit Polyclonal Antibody

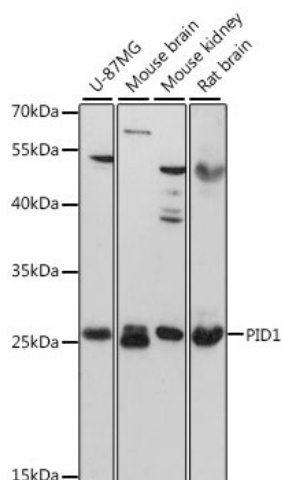
#### Product data:

Product Type:	Primary Antibodies
Applications:	ELISA, IP, WB
Recommended Dilution:	WB, 1:500 - 1:2000 IP, 0.5µg-4µg antibody for 25µg-100µg extracts of whole cells ELISA, Recommended starting concentration is 1 µg/mL. Please optimize the concentration based on your specific assay requirements.
Reactivity:	Human, Mouse, Rat
Modifications:	Unmodified
Host:	Rabbit
Isotype:	IgG
Clonality:	Polyclonal
Formulation:	Buffer: PBS with 0.02% sodium azide, 50% glycerol, pH 7.3.
Concentration:	lot specific
Purification:	Affinity purification
Conjugation:	Unconjugated
Storage:	Store at -20°C. Avoid freeze / thaw cycles.
Stability:	Shelf life: one year from despatch.
Predicted Protein Size:	28kDa
Gene Name:	phosphotyrosine interaction domain containing 1
Database Link:	<a href="#">Entrez Gene 55022 Human Q7Z2X4</a>
Background:	Involved in several processes, including mitochondrion morphogenesis; negative regulation of phosphate metabolic process; and positive regulation of macromolecule metabolic process. Located in cytoplasm.
Synonyms:	FLJ20701; HMFN2073; NYGGF4; P-CLI1; PCLI1

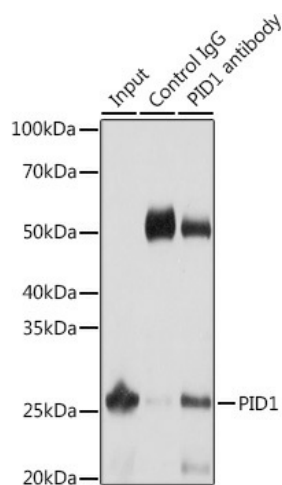


[View online »](#)

## Product images:



Western blot analysis of various lysates using PID1 Rabbit pAb ([TA379913]) at 1:3000 dilution. Secondary antibody: HRP-conjugated Goat anti-Rabbit IgG (H+L) (AS014) at 1:10000 dilution. Lysates/proteins: 25µg per lane. Blocking buffer: 3% nonfat dry milk in TBST. Detection: ECL Enhanced Kit (RM00021). Exposure time: 30s.



Immunoprecipitation analysis of 25 µg extracts of Mouse liver cells using 3 µg PID1 antibody ([TA379913]). Western blot was performed from the immunoprecipitate using PID1 antibody ([TA379913]) at a dilution of 1:1000.