

Product datasheet for **TA379911**

C13orf24 (PIBF1) Rabbit Polyclonal Antibody

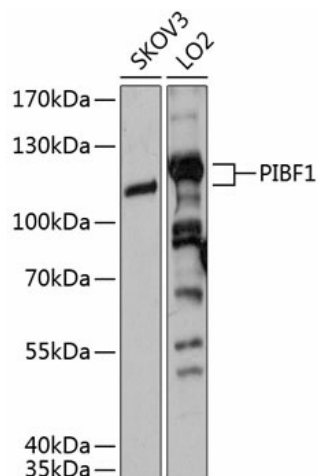
Product data:

Product Type:	Primary Antibodies
Applications:	WB
Recommended Dilution:	WB,1:500 - 1:2000
Reactivity:	Human
Modifications:	Unmodified
Host:	Rabbit
Isotype:	IgG
Clonality:	Polyclonal
Immunogen:	Recombinant fusion protein containing a sequence corresponding to amino acids 598-757 of human PIBF1 (NP_006337.2).
Formulation:	Buffer: PBS with 0.02% sodium azide,50% glycerol,pH7.3.
Concentration:	lot specific
Purification:	Affinity purification
Conjugation:	Unconjugated
Storage:	Store at -20°C. Avoid freeze / thaw cycles.
Stability:	Shelf life: one year from despatch.
Predicted Protein Size:	12kDa/25kDa/35kDa/89kDa
Gene Name:	progesterone immunomodulatory binding factor 1
Database Link:	Entrez Gene 10464 Human Q8WXW3
Background:	This gene encodes a protein that is induced by the steroid hormone progesterone and plays a role in the maintenance of pregnancy. The encoded protein regulates multiple facets of the immune system to promote normal pregnancy including cytokine synthesis, natural killer (NK) cell activity, and arachidonic acid metabolism. Low serum levels of this protein have been associated with spontaneous pre-term labor in humans. This protein may promote the proliferation, migration and invasion of glioma. [provided by RefSeq, Mar 2017]
Synonyms:	C13orf24; KIAA1008; PIBF; RP11-505F3.1



[View online »](#)

Product images:



Western blot analysis of extracts of various cell lines, using PIBF1 antibody (TA379911) at 1:3000 dilution. | Secondary antibody: HRP Goat Anti-Rabbit IgG (H+L) at 1:10000 dilution. | Lysates/proteins: 25ug per lane. | Blocking buffer: 3% nonfat dry milk in TBST. | Detection: ECL Basic Kit. | Exposure time: 3s.