

Product datasheet for **TA379907S**

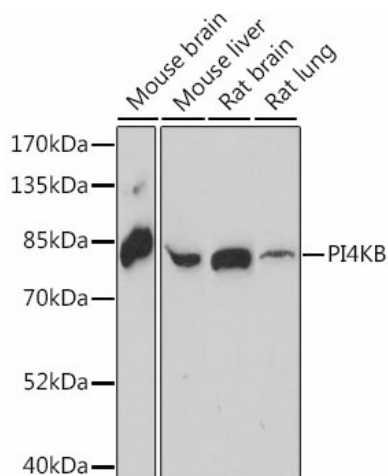
PI4KB Rabbit Polyclonal Antibody

Product data:

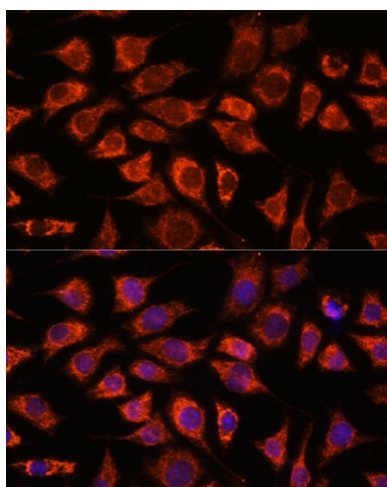
Product Type:	Primary Antibodies
Applications:	ELISA, ICC/IF, WB
Recommended Dilution:	WB, 1:1000 - 1:5000 IF/ICC, 1:50 - 1:200 ELISA, Recommended starting concentration is 1 µg/mL. Please optimize the concentration based on your specific assay requirements.
Reactivity:	Mouse, Human
Modifications:	Unmodified
Host:	Rabbit
Isotype:	IgG
Clonality:	Polyclonal
Formulation:	PBS with 0.05% proclin300, 50% glycerol, pH7.3.
Concentration:	lot specific
Purification:	Affinity purification
Conjugation:	Unconjugated
Storage:	Store at -20°C. Avoid freeze / thaw cycles.
Stability:	Shelf life: one year from despatch.
Predicted Protein Size:	91kDa
Gene Name:	phosphatidylinositol 4-kinase beta
Database Link:	Entrez Gene 5298 Human Q9UBF8
Background:	Enables 1-phosphatidylinositol 4-kinase activity and 14-3-3 protein binding activity. Predicted to be involved in phosphatidylinositol phosphate biosynthetic process and phosphatidylinositol-mediated signaling. Located in Golgi membrane.
Synonyms:	NPIK; OTTHUMP00000014284; PI4K-BETA; PI4K92; PI4KBETA; PI4KIIIBETA; PIK4CB


[View online »](#)

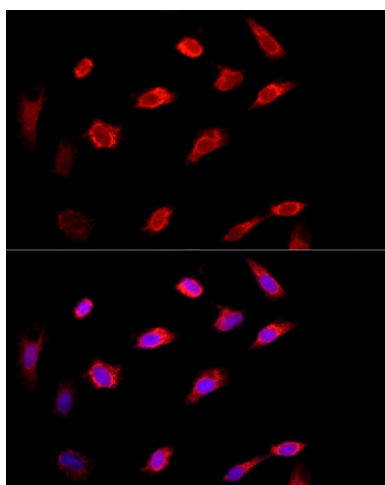
Product images:



Western blot analysis of lysates from Mouse thymus



Immunofluorescence analysis of MCF7 cells using PI4KB Rabbit pAb ([TA379907]) at dilution of 1:200 (40x lens). Secondary antibody: Cy3-conjugated Goat anti-Rabbit IgG (H+L) (AS007) at 1:500 dilution. Blue: DAPI for nuclear staining.



Immunofluorescence analysis of NIH/3T3 cells using PI4KB Rabbit pAb ([TA379907]) at dilution of 1:200 (40x lens). Secondary antibody: Cy3-conjugated Goat anti-Rabbit IgG (H+L) (AS007) at 1:500 dilution. Blue: DAPI for nuclear staining.