

## Product datasheet for **TA379905**

### PI 4 Kinase type 2 beta (PI4K2B) Rabbit Polyclonal Antibody

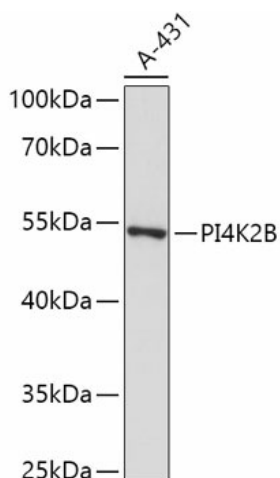
#### Product data:

Product Type:	Primary Antibodies
Applications:	WB
Recommended Dilution:	WB,1:500 - 1:2000
Reactivity:	Human
Modifications:	Unmodified
Host:	Rabbit
Isotype:	IgG
Clonality:	Polyclonal
Immunogen:	Recombinant fusion protein containing a sequence corresponding to amino acids 1-120 of human PI4K2B (NP_060793.2).
Formulation:	Buffer: PBS with 0.02% sodium azide,50% glycerol,pH7.3.
Concentration:	lot specific
Purification:	Affinity purification
Conjugation:	Unconjugated
Storage:	Store at -20°C. Avoid freeze / thaw cycles.
Stability:	Shelf life: one year from despatch.
Gene Name:	phosphatidylinositol 4-kinase type 2 beta
Database Link:	<a href="#">Entrez Gene 55300 Human Q8TCG2</a>
Background:	This gene encodes a member of the type II PI4 kinase protein family. The encoded protein is primarily cytosolic and contributes to overall PI4-kinase activity along with other protein family members. This protein is involved in early T cell activation. [provided by RefSeq, Dec 2016]
Synonyms:	FLJ111105; PI4KII-BETA; PI4KIIB; PIK42B



[View online »](#)

## Product images:



Western blot analysis of extracts of A-431 cells, using PI4K2B antibody (TA379905) at 1:1000 dilution. | Secondary antibody: HRP Goat Anti-Rabbit IgG (H+L) at 1:10000 dilution. | Lysates/proteins: 25ug per lane. | Blocking buffer: 3% nonfat dry milk in TBST. | Detection: ECL Basic Kit . | Exposure time: 10s.