

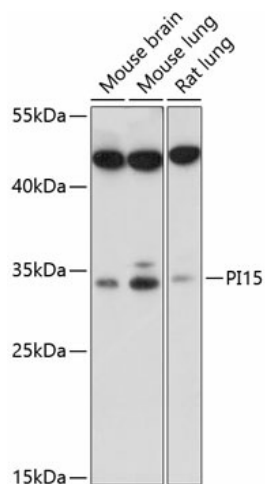
## Product datasheet for TA379903S

### Protease Inhibitor 15 (PI15) Rabbit Polyclonal Antibody

#### Product data:

Product Type:	Primary Antibodies
Applications:	ELISA, WB
Recommended Dilution:	WB, 1:500 - 1:2000 ELISA, Recommended starting concentration is 1 µg/mL. Please optimize the concentration based on your specific assay requirements.
Reactivity:	Mouse, Rat
Modifications:	Unmodified
Host:	Rabbit
Isotype:	IgG
Clonality:	Polyclonal
Formulation:	Buffer: PBS with 0.02% sodium azide, 50% glycerol, pH 7.3.
Concentration:	lot specific
Purification:	Affinity purification
Conjugation:	Unconjugated
Storage:	Store at -20°C. Avoid freeze / thaw cycles.
Stability:	Shelf life: one year from despatch.
Predicted Protein Size:	29kDa
Gene Name:	peptidase inhibitor 15
Database Link:	<a href="#">O43692</a>
Background:	This gene encodes a trypsin inhibitor. The protein shares similarity to insect venom allergens, mammalian testis-specific proteins and plant pathogenesis-related proteins. It is frequently expressed in human neuroblastoma and glioblastoma cell lines, and thus may play a role in the central nervous system.
Synonyms:	CRISP-8; CRISP8; DKFZp686F0366; P24TI; P25TI; SugarCrisp


[View online »](#)

**Product images:**


Western blot analysis of various lysates using PI15 Rabbit pAb (TA379903S) at 1:1000 dilution. Secondary antibody: HRP-conjugated Goat anti-Rabbit IgG (H+L) (AS014) at 1:10000 dilution. Lysates/proteins: 25µg per lane. Blocking buffer: 3% nonfat dry milk in TBST. Detection: ECL Basic Kit (RM00020). Exposure time: 90s.