

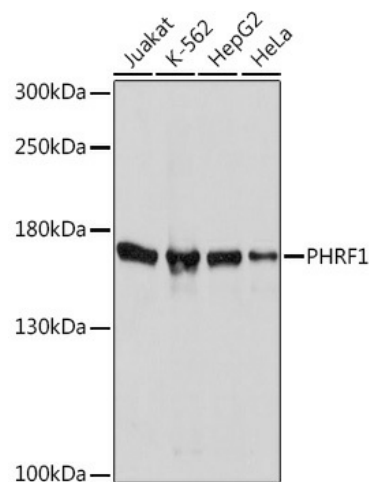
Product datasheet for **TA379900S**

PHRF1 Rabbit Polyclonal Antibody

Product data:

Product Type:	Primary Antibodies
Applications:	ELISA, WB
Recommended Dilution:	WB, 1:500 - 1:2000 ELISA, Recommended starting concentration is 1 µg/mL. Please optimize the concentration based on your specific assay requirements.
Reactivity:	Human
Host:	Rabbit
Isotype:	IgG
Clonality:	Polyclonal
Formulation:	Buffer: PBS with 0.02% sodium azide, 50% glycerol, pH7.3.
Concentration:	lot specific
Purification:	Affinity purification
Conjugation:	Unconjugated
Storage:	Store at -20°C. Avoid freeze / thaw cycles.
Stability:	Shelf life: one year from despatch.
Predicted Protein Size:	179kDa
Gene Name:	PHD and ring finger domains 1
Database Link:	Entrez Gene 57661 Human Q9P1Y6
Background:	Predicted to enable RNA polymerase binding activity. Predicted to be involved in mRNA processing and transcription by RNA polymerase II. Located in membrane.
Synonyms:	KIAA1542; RNF221

[View online »](#)

Product images:


Western blot analysis of various lysates using PHRF1 Rabbit pAb (TA379900) at 1:1000 dilution. Secondary antibody: HRP-conjugated Goat anti-Rabbit IgG (H+L) (AS014) at 1:10000 dilution. Lysates/proteins: 25µg per lane. Blocking buffer: 3% nonfat dry milk in TBST. Detection: ECL Basic Kit (RM00020). Exposure time: 10s.