

## Product datasheet for **TA379890**

### PHLPP2 Rabbit Polyclonal Antibody

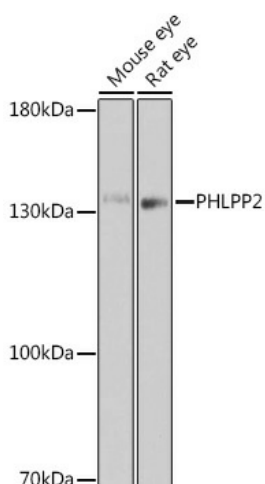
#### Product data:

Product Type:	Primary Antibodies
Applications:	ICC/IF, WB
Recommended Dilution:	WB,1:500 - 1:2000 IF,1:50 - 1:200
Reactivity:	Human, Mouse, Rat
Host:	Rabbit
Isotype:	IgG
Clonality:	Polyclonal
Immunogen:	Recombinant protein of human PHLPP2.
Formulation:	Buffer: PBS with 0.02% sodium azide,50% glycerol,pH7.3.
Concentration:	lot specific
Purification:	Affinity purification
Conjugation:	Unconjugated
Storage:	Store at -20°C. Avoid freeze / thaw cycles.
Stability:	Shelf life: one year from despatch.
Predicted Protein Size:	147kDa
Gene Name:	PH domain and leucine rich repeat protein phosphatase 2
Database Link:	<a href="#">Entrez Gene 23035 Human Q6ZVD8</a>
Background:	PHLPP2 (PH domain and leucine rich repeat protein phosphatase 2) is a protein-coding gene. GO annotations related to this gene include protein serine/threonine phosphatase activity. An important paralog of this gene is PHLPP1.
Synonyms:	KIAA0931; PHLPP-like; PHLPPL

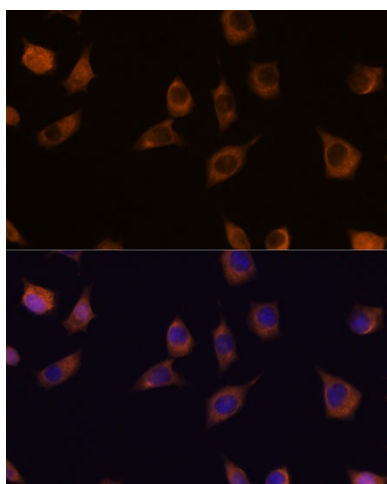


[View online »](#)

## Product images:



Western blot analysis of extracts of various cell lines, using PHLPP2 antibody (TA379890) at 1:1000 dilution. | Secondary antibody: HRP Goat Anti-Rabbit IgG (H+L) at 1:10000 dilution. | Lysates/proteins: 25ug per lane. | Blocking buffer: 3% nonfat dry milk in TBST. | Detection: ECL Basic Kit . | Exposure time: 180s.



Immunofluorescence analysis of L929 cells using PHLPP2 antibody (TA379890) at dilution of 1:100. Blue: DAPI for nuclear staining.