

## Product datasheet for **TA379889**

### PHLPP (PHLPP1) Rabbit Polyclonal Antibody

#### Product data:

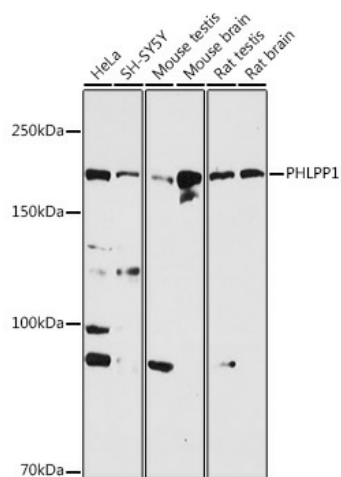
Product Type:	Primary Antibodies
Applications:	ICC/IF, IHC, WB
Recommended Dilution:	WB,1:500 - 1:2000 IHC,1:50 - 1:200 IF,1:50 - 1:200
Reactivity:	Human, Mouse, Rat
Modifications:	Unmodified
Host:	Rabbit
Isotype:	IgG
Clonality:	Polyclonal
Immunogen:	Recombinant fusion protein containing a sequence corresponding to amino acids 1508-1717 of human PHLPP1 (NP_919431.2).
Formulation:	Buffer: PBS with 0.02% sodium azide,50% glycerol,pH7.3.
Concentration:	lot specific
Purification:	Affinity purification
Conjugation:	Unconjugated
Storage:	Store at -20°C. Avoid freeze / thaw cycles.
Stability:	Shelf life: one year from despatch.
Predicted Protein Size:	133kDa/184kDa
Gene Name:	PH domain and leucine rich repeat protein phosphatase 1
Database Link:	<a href="#">Entrez Gene 23239 Human O60346</a>
Background:	This gene encodes a member of the serine/threonine phosphatase family. The encoded protein promotes apoptosis by dephosphorylating and inactivating the serine/threonine kinase Akt, and functions as a tumor suppressor in multiple types of cancer. Increased expression of this gene may also play a role in obesity and type 2 diabetes by interfering with Akt-mediated insulin signaling.



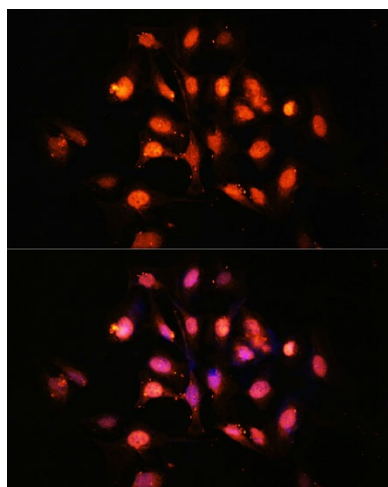
[View online »](#)

Synonyms: hSCOP; KIAA0606; MGC161555; PHLPP; PLEKHE1; SCOP

**Product images:**



Western blot analysis of extracts of various cell lines, using PHLPP1 antibody (TA379889) at 1:1000 dilution. | Secondary antibody: HRP Goat Anti-Rabbit IgG (H+L) at 1:10000 dilution. | Lysates/proteins: 25ug per lane. | Blocking buffer: 3% nonfat dry milk in TBST. | Detection: ECL Basic Kit . | Exposure time: 30s.



Immunofluorescence analysis of U-2 OS cells using PHLPP1 Polyclonal Antibody (TA379889) at dilution of 1:100 (40x lens). Blue: DAPI for nuclear staining.