

## Product datasheet for **TA379872**

### PHF21B Rabbit Polyclonal Antibody

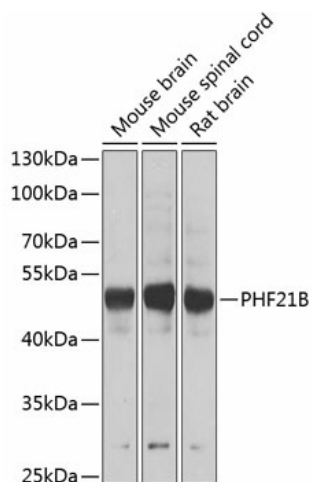
#### Product data:

Product Type:	Primary Antibodies
Applications:	WB
Recommended Dilution:	WB,1:500 - 1:2000
Reactivity:	Human, Mouse, Rat
Modifications:	Unmodified
Host:	Rabbit
Isotype:	IgG
Clonality:	Polyclonal
Immunogen:	Recombinant fusion protein containing a sequence corresponding to amino acids 322-531 of human PHF21B (NP_612424.1).
Formulation:	Buffer: PBS with 0.02% sodium azide,50% glycerol,pH7.3.
Concentration:	lot specific
Purification:	Affinity purification
Conjugation:	Unconjugated
Storage:	Store at -20°C. Avoid freeze / thaw cycles.
Stability:	Shelf life: one year from despatch.
Predicted Protein Size:	51kDa/53kDa/57kDa
Gene Name:	PHD finger protein 21B
Database Link:	<a href="#">Entrez Gene 112885 Human Q96EK2</a>
Synonyms:	BHC80L; FLJ34161; KIAA1661; OTTHUMP00000199356; PHF4



[View online »](#)

## Product images:



Western blot analysis of extracts of various cell lines, using PHF21B antibody (TA379872) at 1:1000 dilution. | Secondary antibody: HRP Goat Anti-Rabbit IgG (H+L) at 1:10000 dilution. | Lysates/proteins: 25ug per lane. | Blocking buffer: 3% nonfat dry milk in TBST. | Detection: ECL Basic Kit . | Exposure time: 90s.