

Product datasheet for TA379869S

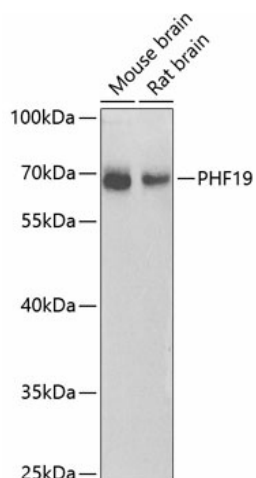
PHF19 Rabbit Polyclonal Antibody

Product data:

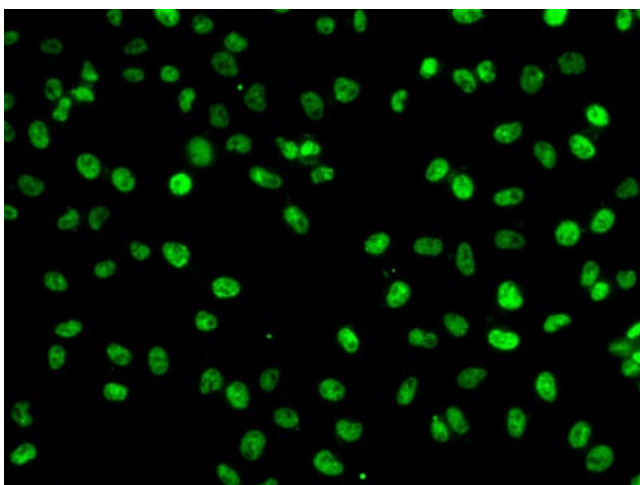
Product Type:	Primary Antibodies
Applications:	ELISA, ICC/IF, WB
Recommended Dilution:	WB, 1:500 - 1:2000 IF/ICC, 1:50 - 1:100 ELISA, Recommended starting concentration is 1 µg/mL. Please optimize the concentration based on your specific assay requirements.
Reactivity:	Human, Mouse, Rat
Modifications:	Unmodified
Host:	Rabbit
Isotype:	IgG
Clonality:	Polyclonal
Formulation:	PBS with 0.09% Sodium azide, 50% glycerol, pH 7.3.
Concentration:	lot specific
Purification:	Affinity purification
Conjugation:	Unconjugated
Storage:	Store at -20°C. Avoid freeze / thaw cycles.
Stability:	Shelf life: one year from despatch.
Predicted Protein Size:	66kDa
Gene Name:	PHD finger protein 19
Database Link:	Entrez Gene 26147 Human Q5T6S3
Background:	Enables methylated histone binding activity. Involved in positive regulation of histone H3-K27 methylation. Colocalizes with ESC/E(Z) complex.
Synonyms:	DKFZP727G051; hPCL3; MGC23929; MGC131698; MGC149712; MGC149713; MTF2L1; PCL3


[View online »](#)

Product images:



Western blot analysis of various lysates using PHF19 Rabbit pAb ([TA379869]) at 1:1000 dilution. Secondary antibody: HRP-conjugated Goat anti-Rabbit IgG (H+L) (AS014) at 1:10000 dilution. Lysates/proteins: 25µg per lane. Blocking buffer: 3% nonfat dry milk in TBST. Detection: ECL Basic Kit (RM00020). Exposure time: 90s.



Immunofluorescence analysis of A-549 cells using PHF19 Rabbit pAb ([TA379869]). Secondary antibody: Cy3-conjugated Goat anti-Rabbit IgG (H+L) (AS007) at 1:500 dilution.