

Product datasheet for **TA379863S**

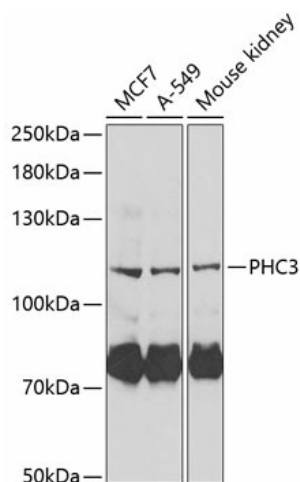
PHC3 Rabbit Polyclonal Antibody

Product data:

Product Type:	Primary Antibodies
Applications:	ELISA, WB
Recommended Dilution:	WB, 1:500 - 1:2000 ELISA, Recommended starting concentration is 1 µg/mL. Please optimize the concentration based on your specific assay requirements.
Reactivity:	Human, Mouse, Rat
Modifications:	Unmodified
Host:	Rabbit
Isotype:	IgG
Clonality:	Polyclonal
Formulation:	Buffer: PBS with 0.02% sodium azide, 50% glycerol, pH 7.3.
Concentration:	lot specific
Purification:	Affinity purification
Conjugation:	Unconjugated
Storage:	Store at -20°C. Avoid freeze / thaw cycles.
Stability:	Shelf life: one year from despatch.
Predicted Protein Size:	106kDa
Gene Name:	polyhomeotic homolog 3
Database Link:	Entrez Gene 80012 Human Q8NDX5
Background:	Predicted to enable chromatin binding activity and histone binding activity. Predicted to be involved in negative regulation of transcription, DNA-templated. Located in nucleoplasm. Part of PRC1 complex.
Synonyms:	DKFZp313K1221; EDR3; FLJ12729; FLJ12967; HPH3; MGC88144; PH3


[View online »](#)

Product images:



Western blot analysis of various lysates using PHC3 Rabbit pAb ([TA379863]) at 1:1000 dilution. Secondary antibody: HRP-conjugated Goat anti-Rabbit IgG (H+L) (AS014) at 1:10000 dilution. Lysates/proteins: 25µg per lane. Blocking buffer: 3% nonfat dry milk in TBST. Detection: ECL Enhanced Kit (RM00021). Exposure time: 30s.