

Product datasheet for **TA379859**

PHACTR1 Rabbit Polyclonal Antibody

Product data:

Product Type:	Primary Antibodies
Applications:	WB
Recommended Dilution:	WB,1:1000 - 1:2000
Reactivity:	Human, Mouse, Rat
Modifications:	Unmodified
Host:	Rabbit
Isotype:	IgG
Clonality:	Polyclonal
Immunogen:	Recombinant protein of human PHACTR1.
Formulation:	Buffer: PBS with 0.02% sodium azide,50% glycerol,pH7.3.
Concentration:	lot specific
Purification:	Affinity purification
Conjugation:	Unconjugated
Storage:	Store at -20°C. Avoid freeze / thaw cycles.
Stability:	Shelf life: one year from despatch.
Predicted Protein Size:	66kDa
Gene Name:	phosphatase and actin regulator 1
Database Link:	Entrez Gene 221692 Human Q9C0D0

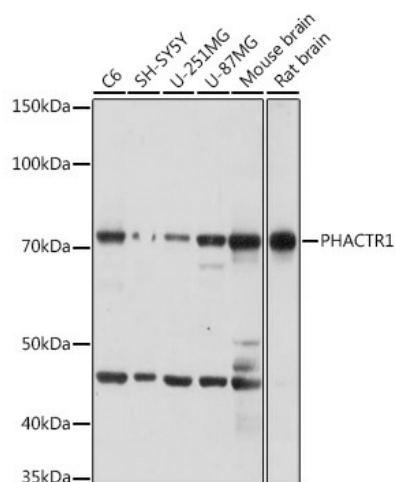
Background: The protein encoded by this gene is a member of the phosphatase and actin regulator family of proteins. This family member can bind actin and regulate the reorganization of the actin cytoskeleton. It plays a role in tubule formation and in endothelial cell survival. Polymorphisms in this gene are associated with susceptibility to myocardial infarction, coronary artery disease and cervical artery dissection. Alternative splicing of this gene results in multiple transcript variants.

Synonyms: dj257A7.2; KIAA1733; MGC126575; MGC126577; RPEL; RPEL1



[View online »](#)

Product images:



Western blot analysis of extracts of various cell lines, using PHACTR1 antibody (TA379859) at 1:1000 dilution. | Secondary antibody: HRP Goat Anti-Rabbit IgG (H+L) at 1:10000 dilution. | Lysates/proteins: 25ug per lane. | Blocking buffer: 3% nonfat dry milk in TBST. | Detection: ECL Basic Kit . | Exposure time: 3s.