

Product datasheet for **TA379857S**

PGRMC2 Rabbit Polyclonal Antibody

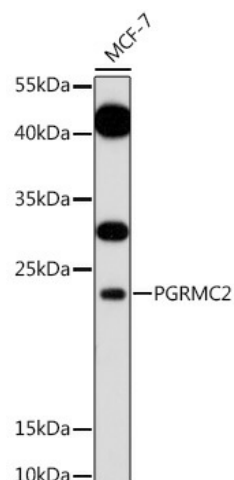
Product data:

Product Type:	Primary Antibodies
Applications:	ELISA, ICC/IF, WB
Recommended Dilution:	WB, 1:500 - 1:2000 IF/ICC, 1:50 - 1:200 ELISA, Recommended starting concentration is 1 µg/mL. Please optimize the concentration based on your specific assay requirements.
Reactivity:	Human, Mouse
Host:	Rabbit
Isotype:	IgG
Clonality:	Polyclonal
Formulation:	Buffer: PBS with 0.02% sodium azide, 50% glycerol, pH 7.3.
Concentration:	lot specific
Purification:	Affinity purification
Conjugation:	Unconjugated
Storage:	Store at -20°C. Avoid freeze / thaw cycles.
Stability:	Shelf life: one year from despatch.
Predicted Protein Size:	24kDa
Gene Name:	progesterone receptor membrane component 2
Database Link:	Entrez Gene 10424 Human O15173
Background:	Enables heme binding activity. Involved in adipose tissue development. Located in endoplasmic reticulum and nuclear envelope.
Synonyms:	DG6; PMBP

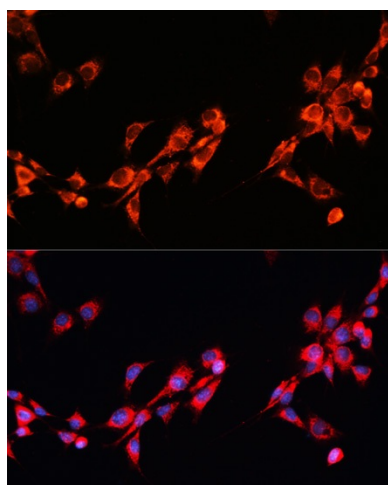


[View online »](#)

Product images:



Western blot analysis of lysates from MCF-7 cells



Immunofluorescence analysis of NIH/3T3 cells using PGRMC2 Rabbit pAb ([TA379857]) at dilution of 1:100. Secondary antibody: Cy3-conjugated Goat anti-Rabbit IgG (H+L) (AS007) at 1:500 dilution. Blue: DAPI for nuclear staining.