

Product datasheet for **TA379857**

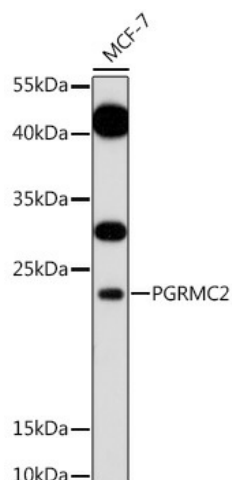
PGRMC2 Rabbit Polyclonal Antibody

Product data:

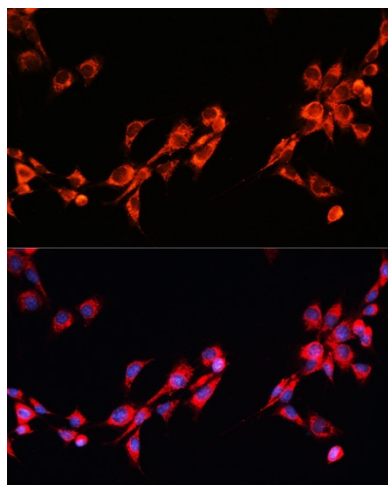
Product Type:	Primary Antibodies
Applications:	ICC/IF, WB
Recommended Dilution:	WB,1:500 - 1:2000 IF,1:50 - 1:200
Reactivity:	Human, Mouse
Host:	Rabbit
Isotype:	IgG
Clonality:	Polyclonal
Immunogen:	A synthetic peptide of human PGRMC2
Formulation:	Buffer: PBS with 0.02% sodium azide,50% glycerol,pH7.3.
Concentration:	lot specific
Purification:	Affinity purification
Conjugation:	Unconjugated
Storage:	Store at -20°C. Avoid freeze / thaw cycles.
Stability:	Shelf life: one year from despatch.
Predicted Protein Size:	23kDa/26kDa
Gene Name:	progesterone receptor membrane component 2
Database Link:	Entrez Gene 10424 Human O15173
Background:	Required for the maintenance of uterine histoarchitecture and normal female reproductive lifespan (By similarity. May serve as a universal non-classical progesterone receptor in the uterus (Probable. Intracellular heme chaperone required for delivery of labile, or signaling heme, to the nucleus (By similarity. Plays a role in adipocyte function and systemic glucose homeostasis. In brown fat, which has a high demand for heme, delivery of labile heme in the nucleus regulates the activity of heme-responsive transcriptional repressors such as NR1D1 and BACH1 (By similarity.
Synonyms:	DG6; PMBP



[View online »](#)

Product images:

Western blot analysis of extracts of MCF-7 cells, using PGRMC2 antibody (TA379857) at 1:1000 dilution. | Secondary antibody: HRP Goat Anti-Rabbit IgG (H+L) at 1:10000 dilution. | Lysates/proteins: 25ug per lane. | Blocking buffer: 3% nonfat dry milk in TBST. | Detection: ECL Basic Kit . | Exposure time: 5min.



Immunofluorescence analysis of NIH/3T3 cells using PGRMC2 antibody (TA379857) at dilution of 1:100. Blue: DAPI for nuclear staining.