

Product datasheet for TA379852S

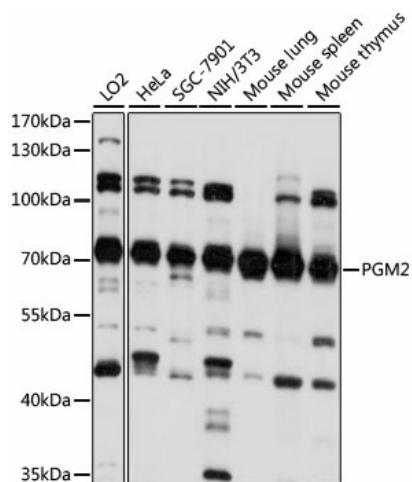
PGM2 Rabbit Polyclonal Antibody

Product data:

Product Type:	Primary Antibodies
Applications:	ELISA, WB
Recommended Dilution:	WB, 1:200 - 1:2000 ELISA, Recommended starting concentration is 1 µg/mL. Please optimize the concentration based on your specific assay requirements.
Reactivity:	Human, Mouse
Modifications:	Unmodified
Host:	Rabbit
Isotype:	IgG
Clonality:	Polyclonal
Formulation:	Buffer: PBS with 0.02% sodium azide, 50% glycerol, pH 7.3.
Concentration:	lot specific
Purification:	Affinity purification
Conjugation:	Unconjugated
Storage:	Store at -20°C. Avoid freeze / thaw cycles.
Stability:	Shelf life: one year from despatch.
Predicted Protein Size:	68kDa
Gene Name:	phosphoglucomutase 2
Database Link:	Entrez Gene 55276 Human Q96G03
Background:	Enables phosphopentomutase activity. Predicted to be involved in carbohydrate metabolic process and deoxyribose phosphate catabolic process. Predicted to act upstream of or within glucose metabolic process. Located in extracellular exosome.
Synonyms:	FLJ10983; MSTP006


[View online »](#)

Product images:



Western blot analysis of various lysates using PGM2 Rabbit pAb (TA379852) at 1:1000 dilution. Secondary antibody: HRP-conjugated Goat anti-Rabbit IgG (H+L) (AS014) at 1:10000 dilution. Lysates/proteins: 25µg per lane. Blocking buffer: 3% nonfat dry milk in TBST. Detection: ECL Basic Kit (RM00020). Exposure time: 10s.