

## Product datasheet for **TA379849S**

### **PGRPL (PGLYRP2) Rabbit Polyclonal Antibody**

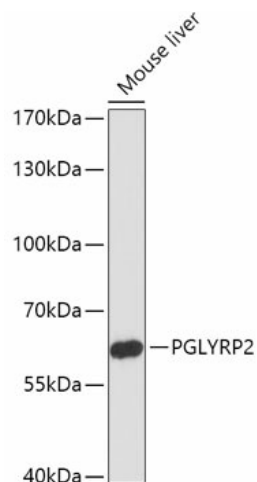
#### **Product data:**

Product Type:	Primary Antibodies
Applications:	WB
Recommended Dilution:	WB,1:500 - 1:2000
Reactivity:	Mouse
Modifications:	Unmodified
Host:	Rabbit
Isotype:	IgG
Clonality:	Polyclonal
Immunogen:	A synthetic peptide of Human PGLYRP2.
Formulation:	Buffer: PBS with 0.02% sodium azide,50% glycerol,pH7.3.
Concentration:	lot specific
Purification:	Affinity purification
Conjugation:	Unconjugated
Storage:	Store at -20°C. Avoid freeze / thaw cycles.
Stability:	Shelf life: one year from despatch.
Predicted Protein Size:	62kDa/68kDa
Gene Name:	peptidoglycan recognition protein 2
Database Link:	<a href="#">Q96PD5</a>
Background:	This gene encodes a peptidoglycan recognition protein, which belongs to the N-acetylmuramoyl-L-alanine amidase 2 family. This protein hydrolyzes the link between N-acetylmuramoyl residues and L-amino acid residues in bacterial cell wall glycopeptides, and thus may play a scavenger role by digesting biologically active peptidoglycan into biologically inactive fragments. [provided by RefSeq, Sep 2011]
Synonyms:	HMFT0141; PGLYRPL; PGRP-L; PGRPL; tagL; tagL-alpha; tagL-beta; TAGL-like



[View online »](#)

## Product images:



Western blot analysis of extracts of Mouse liver, using PGLYRP2 antibody ([TA379849]) at 1:1000 dilution. | Secondary antibody: HRP Goat Anti-Rabbit IgG (H+L) at 1:10000 dilution. | Lysates/proteins: 25ug per lane. | Blocking buffer: 3% nonfat dry milk in TBST. | Detection: ECL Enhanced Kit . | Exposure time: 90s.