

Product datasheet for **TA379848**

PGRPS (PGLYRP1) Rabbit Polyclonal Antibody

Product data:

Product Type:	Primary Antibodies
Applications:	WB
Recommended Dilution:	WB,1:500 - 1:2000
Reactivity:	Human
Modifications:	Unmodified
Host:	Rabbit
Isotype:	IgG
Clonality:	Polyclonal
Immunogen:	Recombinant fusion protein containing a sequence corresponding to amino acids 22-196 of human PGLYRP1 (NP_005082.1).
Formulation:	Buffer: PBS with 0.02% sodium azide,50% glycerol,pH7.3.
Concentration:	lot specific
Purification:	Affinity purification
Conjugation:	Unconjugated
Storage:	Store at -20°C. Avoid freeze / thaw cycles.
Stability:	Shelf life: one year from despatch.
Predicted Protein Size:	21kDa
Gene Name:	peptidoglycan recognition protein 1
Database Link:	Entrez Gene 8993 Human O75594



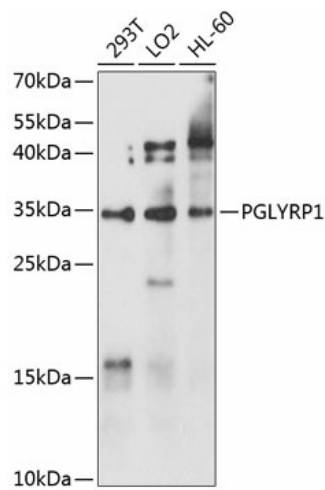
[View online »](#)

Background:

Innate immunity protein that plays several important functions in antimicrobial and antitumor defense systems. Acts as a pattern receptor that binds to murein peptidoglycans (PGN of Gram-positive bacteria and thus provides bactericidal activity. Forms an equimolar complex with heat shock protein HSPA1A and induces programmed cell death through apoptosis and necroptosis in tumor cell lines by activating the TNFR1 receptor on the target cell membrane. In addition, acts in complex with the Ca²⁺-binding protein S100A4 as a chemoattractant able to induce lymphocyte movement. Mechanistically, this complex acts as a ligand of the chemotactic receptors CCR5 and CXCR3 which are present on the cells of the immune system. Promotes also the activation of lymphocytes that become able to kill virus-infected cells as well as tumor cells by modulating the spectrum of their target-cell specificity. Induction of cytotoxicity on monocyte surface requires interaction with TREM1 receptor.

Synonyms:

MGC126894; MGC126896; PGLYRP; PGRP; PGRP-S; PGRPS; TAG7; TNFSF3L

Product images:

Western blot analysis of extracts of various cell lines, using PGLYRP1 antibody (TA379848) at 1:1000 dilution. | Secondary antibody: HRP Goat Anti-Rabbit IgG (H+L) at 1:10000 dilution. | Lysates/proteins: 25ug per lane. | Blocking buffer: 3% nonfat dry milk in TBST. | Detection: ECL Basic Kit . | Exposure time: 5s.