

## Product datasheet for **TA379842S**

### **PGBD1 Rabbit Polyclonal Antibody**

#### **Product data:**

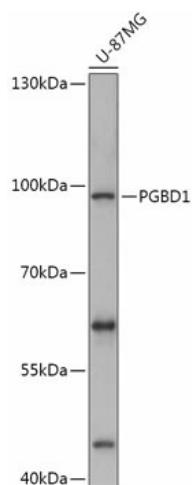
Product Type:	Primary Antibodies
Applications:	ELISA, WB
Recommended Dilution:	WB, 1:500 - 1:2000 ELISA, Recommended starting concentration is 1 µg/mL. Please optimize the concentration based on your specific assay requirements.
Reactivity:	Human
Modifications:	Unmodified
Host:	Rabbit
Isotype:	IgG
Clonality:	Polyclonal
Formulation:	Buffer: PBS with 0.02% sodium azide, 50% glycerol, pH 7.3.
Concentration:	lot specific
Purification:	Affinity purification
Conjugation:	Unconjugated
Storage:	Store at -20°C. Avoid freeze / thaw cycles.
Stability:	Shelf life: one year from despatch.
Predicted Protein Size:	93kDa
Gene Name:	piggyBac transposable element derived 1
Database Link:	<a href="#">Entrez Gene 84547 Human</a> <a href="#">Q96JS3</a>
Background:	The piggyBac family of proteins, found in diverse animals, are transposases related to the transposase of the canonical piggyBac transposon from the moth, <i>Trichoplusia ni</i> . This family also includes genes in several genomes, including human, that appear to have been derived from the piggyBac transposons. This gene belongs to the subfamily of piggyBac transposable element derived (PGBD) genes. The PGBD proteins appear to be novel, with no obvious relationship to other transposases, or other known protein families. This gene product is specifically expressed in the brain, however, its exact function is not known. Alternative splicing results in multiple transcript variants encoding the same protein.



[View online »](#)

**Synonyms:** dj874C20.4; HUCEP-4; OTTHUMP00000016203; SCAND4

**Product images:**



Western blot analysis of lysates from U-87MG cells